

# RUSTY can beat the brain bug.. can you?

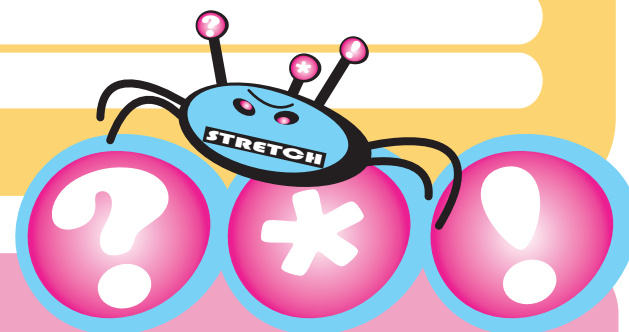
## QUESTIONS..

- 1 Look at the black signpost at the crossroads in Bourne End. How far is Octeville sur Mer from Bourne End? Why do you think there is a sign to this village in France?
- 2 Look at the bottom of the houses near the marina. What is unusual about them and why?
- 3 A high flood mark is shown next to the sign for Spade Oak Meadow. What month and year was that flood?
- 4 The river flows to London and then into the sea. Is the river flowing right or left?
- 5 Notice how straight the railway line is. Why do you think it is so straight?
- 6 What colour are the life belts near the lake and why?
- 7 What is the name of the church in Little Marlow?
- 8 There are lots of oak trees here. What is their fruit called?
- 9 What was dug out of the ground to make Spade Oak Lake?
- 10 What is the name of the pub?



## ANSWERS..

- 1
- 2
- 3
- 4
- 5
- 6
- 7
- 8
- 9
- 10



take a **STRETCH** brain bug on your walk and **STRETCH** your brainpower! check your answers at... [www.chilternsaonb.org](http://www.chilternsaonb.org)  
(then search for... little marlow walk)



brain bug  
**LITTLE MARLOW**