



Chilterns Conservation Board Annual Review 2020-2021



Welcome



Welcome to the Chilterns Conservation Board (CCB) annual review, reporting on the CCB's work to conserve and enhance the Chilterns Area of Outstanding Natural Beauty over the year 2020-21. Of course this has been a challenging year as the Board, like everyone else has had to face the challenges of maintaining continuity of service during the global Covid pandemic. I must pay tribute to the staff and thank all our stakeholders who have worked so hard to achieve so much in such strange times.

The international news has not just been full of the pandemic but also of increasing awareness of climate change and the need for nature recovery. Health and wellbeing are words that have taken on a whole new meaning for everyone and here the protected landscapes have certainly proved their worth. We are proud to be in the centre of all these issues and of course supporting many Chilterns businesses through our activities and communications campaigns.

Through the many uncertainties that surround us we can be sure that the timeless value of our precious Chilterns will continue to be a vital resource for all to enjoy and appreciate.

A handwritten signature in black ink, appearing to read 'Paul Mainds'.

Paul Mainds BEM, Chairman

A note from our CEO

No-one could have anticipated the huge impact of Covid-19 on all our lives. The past few months have been challenging for everyone and I would like to thank the staff team for their flexibility and 'can-do' approach. They rose to the challenge magnificently – working from home, resetting priorities, showing huge resilience and innovation in a time of great uncertainty and worry.

They've also embraced the opportunities provided by Covid-19 and we ran our first ever "Chilterns Celebration" during October 2020, incorporating our ever-popular Walking Festival, an online Citizen Science Conference, family-friendly events and much more.

We were already talking with our partners on how best to collaborate to build resilience in the Chilterns, so Covid-19 has strengthened our resolve and created an even greater urgency to protect our special landscape for people and nature now and in the future.

Elaine King

Dr Elaine King, Chief Executive



Table of contents

1. Caring for our special landscapes

- Chalk, Cherries and Chairs
- Chalkscapes
- Beacons of the Past
- Chilterns Chalk Streams

2. Working together for a green recovery in the Chilterns

- Partnership Event
- Farmer Webinars
- Local Nature Recovery Strategies (LNRs)

3. Mitigation Measures

- Holding HS2 to account
- Undergrounding Electricity Infrastructure
- Mend the Gap Programme
- Planning and Development

4. People and Society

- Summary
- Walking Festival
- Open for business' – Supporting businesses and promoting the rural economy
- Responding to consultations
- Case Study – Social Distance Friendly Walks

5. Communications

- Engaging new audiences

6. Finances

- Our financial Year
- About us





CARING FOR OUR SPECIAL LANDSCAPES

*Collaborative and ongoing action for
the nature, heritage and communities of the Chilterns
Landscape*



CHILTERNS
CONSERVATION BOARD

Chalk, Cherries and Chairs: A Landscape Partnership

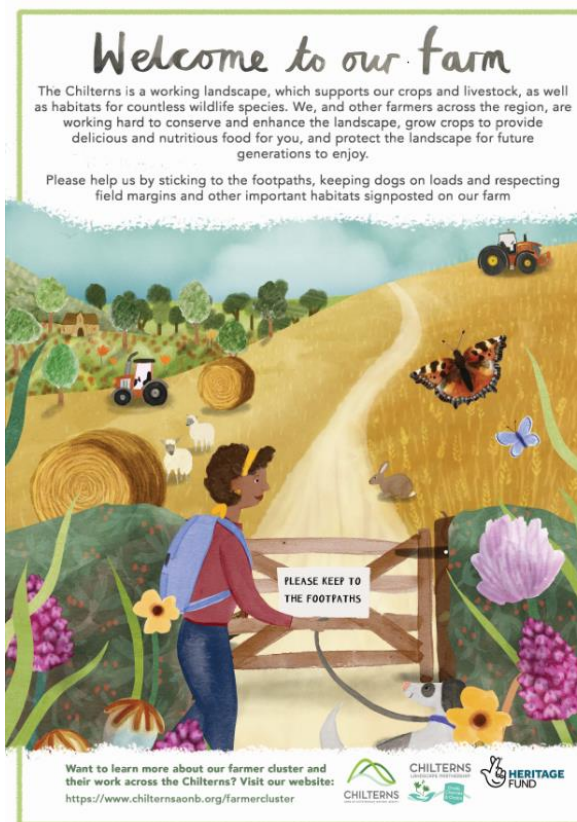
The Covid restrictions over the last 18 months have proven challenging for a scheme involving so many outdoor activities with so much partnership working embedded into the heart of the original design. Despite this, 2020-2021 proved to be a time of innovation and forging ahead with new initiatives for the Chalk Cherries and Chairs Landscape Partnership.

This year the project organised, three mini festivals, including a successful [online citizen-science conference](#) – featuring a keynote speech by Chris Packham and presentations from a range of inspirational scientists. A series of Chilterns-themed walks and talks, and an exciting larger celebration of the project on The Rye in High Wycombe's, where many families joined us to enjoy experiencing heritage crafts and other conservation activities showcased by members of the Chalk, Cherries and Chairs partnership.



Chalk, Cherries and Chairs Landscape Partnership cont.

We worked to design and deliver bespoke, artistic signage for our farmer cluster members, showcasing their hard work and reinforcing the 'field to fork' message to encourage new and increased visitors to the countryside to be respectful of wildlife, livestock and crops. Working at the landscape scale, we have developed whole farm habitat management plans for the 18 farms in our farmer cluster covering 6,500 ha of the Central Chilterns area.



Chalk, Cherries and Chairs: A Landscape Partnership cont.

We moved many elements of our projects online due to the pandemic, which resulted in 10 fascinating 'Woodlanders Lives' stories being published in blog format on our website, and 37 videos published on our [YouTube channel](#) – from wildlife identification training sessions to sound recording tips and stories of local crafts people, we worked hard to bring fascinating information about the Chilterns to a wider audience.

[Find out more on the project page of the website](#)



Chalkscapes Landscape Partnership Project

In December 2020 we were delighted to receive initial support of £262,600 from the National Lottery Heritage Fund, to develop a full project plan for Chalkscapes, an exciting new partnership project in the northern part of the Chilterns AONB.

The project aims to undertake landscape-scale conservation across three focus areas – connection, conservation and collaboration – across the project area of 172 km² of protected landscape, whilst inspiring communities to learn about, explore and take action for their local landscapes.

The project will work with urban communities in Central Bedfordshire, Luton and Hertfordshire to find new and creative ways of inspiring more people to understand and care about the landscape on their doorstep.

[Find out more on the project page of the website](#)



Chalkscapes is an exciting new partnership project designed to inspire people to understand, care for and take action for the precious North Chilterns chalk landscape



Beacons of the Past – Hillforts Project

2020 was a tricky time for the project, with lockdowns meaning fewer practical hands-on activities in the delivery of our objectives. However, the online portal that launched in August 2019 really came into its own as volunteers could still do archaeology from their homes. The portal not only acquired over 6,000 new registered users over 2020, there was also a boost in archaeological discovery, with well over 10,000 features recorded, including the announcement in August 2020 of the discovery of a new hillfort!

We were proud to co-host and present further information at the Chilterns Conservation Board's Citizen Science Conference in October 2021. In addition, January 2021 saw the project gain fame by being featured on BBC's Countryfile.

Early Spring 2021 brought some bittersweet news, as Dr Ed Peveler left the project to move on to pastures new. Given the project was due to end in October 2021, the decision was made not to recruit the post fulltime, making funds meant available to extend the project to September 2022! This gives Beacons of the Past nearly a whole extra year to do amazing things, and to make up for lost time. Watch this space!

[Find out more on the project page of the website](#)



*Chilfords in British Archaeology
magazine 176, Jan-Feb 2021.*



Chilterns Chalk Streams Project

In June 2020, the pressure on the Chilterns' precious chalk streams was unprecedented. With temperatures soaring and more people at home due to the Covid lockdown, Affinity Water urged the public to save water to protect supplies and the environment.

In July of the same year, the River Wye in High Wycombe received a boost as Thames Water reduced the amount of water it takes from underground sources close to the river. On 27th September, World Rivers Day, Affinity Water – which provides water to homes and businesses throughout the central and northern Chilterns – [announced](#) that it had voluntarily switched off its groundwater pumping stations in the upper Chess catchment to better sustain flows in the river.

“ChessWatch”– an interactive storymap of the River Chess was [published](#) in February 2021. Developed by Queen Mary University of London in partnership with the River Chess Association and the Chilterns Chalk Streams Project, the new resource provides an overview of the geography and ecology of the river, as well as how people use the river.





WORKING TOGETHER FOR A GREEN RECOVERY IN THE CHILTERNs

*Developing partnerships and building
collaboration*



CHILTERNs
CONSERVATION BOARD

Nature Recovery Network Initiative



The launch event at Hampden Bottom Farm, Great Missenden, attended by Bill Chapple OBE (far left), Marian Spain (second left), and Tony Juniper (fourth from right)

[Read more on our website](#)

In August 2020 Buckinghamshire Council was selected by DEFRA and Natural England to be one of five local authorities to pilot a key part of the government's national Nature Recovery Network initiative.

The initiative is an ambitious plan to strengthen and renew the natural environment across England by potentially creating Local Nature Recovery Strategies (LNRs) in every county area. Each LNRs will combine local knowledge with expert information and advice to plan for more coordinated, practical and focused action to support nature recovery.

Buckinghamshire was chosen for the pilot on the basis of Buckinghamshire Council's well-established collaborative relationships with partners – including the Local Nature Partnership and the Chilterns Conservation Board – its emerging Biodiversity Action Plan, an award-winning Environmental Record Centre, a well-developed biodiversity net gain scheme and having made good progress with natural capital mapping.

An LNRs strategy will provide an excellent evidence base for the new Buckinghamshire Local Plan.

Partnership Event – Working together for a green recovery in the Chilterns

A cornerstone of the Chilterns AONB Management Plan is a focus on consolidating partnerships between organisations in the Chilterns. With a call to action to work more effectively to meet the challenges and opportunities facing the Chilterns, we held a successful online partnership event on 15th October 2020 to discuss how we can work towards a green recovery.

Our expert panel comprised Marian Spain, Chief Executive at Natural England; Pauline Walsh, Chief Executive at Affinity Water; Jonathan Smales, Founder and CEO at Human + Nature and Dr Prue Addison, Conservation Strategy Director at BBOWT. The discussion, chaired by Howard Davies, Chief Executive at the National Association of AONBs covered a wide range of topics including what we think the key ingredients for a green recovery are, what the environment sector learn from responses to the coronavirus pandemic and how can we improve public engagement with, and understanding of, the countryside.

We were pleased to be joined by **over 172** people including representatives from 40 organisations including: local authorities, environment and community groups, charities and those in the health and wellbeing and tourism sectors.



[Click here to watch a video of the event](#)

#chilternsgreenrecovery

Future of farming webinar series – engaging with farmers

Overview

Following opportunities presented by the new 25-year Environment Plan and the new Agriculture Bill, we were keen to bring Chiltern-based farmers together to address the changes and to help them understand what future policy and practice might mean for them and their farms.

We organised a programme of six short online webinars delivered by leading experts in their fields. Each session offered an opportunity to hear from key speakers and ask questions on the topics. Attendees were entered into a free prize draw and a chance to win one of a number of valuable prizes designed to help them implement practical steps linked to each of the key topics.

The series was opened by James Rebanks, Cumbrian farmer and author of bestselling book *English Pastoral*. Following James's session, topics included Regenerative Farming, Carbon Assessment, Understanding the History of your land, Water Friendly Farming and Understanding the Wildlife on your Farm.

Outcomes

The series was promoted via social media, email and word of mouth. Partner organisations circulated flyers to their members, and the speakers re-tweeted the social posts. The six webinars delivered saw a total attendance of 1165 people and 2645 registrations, exceeding all expectations.

[Click here to watch the webinars](#)



Feedback from the farmers

"Informative, positive, inspiring and the most enthusiasm packed into an hour that I've encountered in the last gloomy 12 months!"

~

"The speaker was passionate and knowledgeable, so enthusiastic about the topic. Brilliant. She was able to talk to Us rather than at us. Congrats. Made me believe that we could actually do this!"

~

"I had no idea that the Water Company was so involved with farming, but now I understand why. Alister's talk was well prepared, well paced and nicely delivered."

~

"I enjoyed this session because it told me what I was hoping it would tell me. Kirsty spoke really well from her wealth of personal experience, without over-complicating the subject. The whole series has been brilliant."



MITIGATION MEASURES

Holding contractors and authorities to account by ensuring the highest environmental standards are maintained



CHILTERNS
CONSERVATION BOARD

Holding HS2 to account

Unfortunately, 2020-21 saw the first significant impacts of HS2 with 'enabling works' becoming very visible throughout the route through the Chilterns AONB. With our statutory duties to protect and enhance the AONB, we feel it is important to press HS2 and their contractors to maintain the highest possible environmental standards, in addition to being respectful of our local communities.

Two examples of the damage caused by HS2 came with the removal of 1km of ancient hedgerow along Bottom House Farm Lane, Chalfont St Giles, in May 2020 – prime bird nesting season. This was followed by damage to the bank of the River Misbourne on the same lane in October. We also worked with partners, including Buckinghamshire Council, in an attempt to reduce damage and destruction at Junes Hill Wood, an ancient woodland important for protected bat species and which inspired Roald Dahl's book, *Fantastic Mr. Fox*.

HS2 argued that hedge and woodland removals are carried out after surveys and under ecological supervision, though alternative options road designs were possible and we continue to argue that where habitats have to be damaged or removed, the work should be carried out at the least disruptive time to species such as birds and bats.



Damage to the bank of the River Misbourne
Image Credit: Chiltern Society

Holding HS2 to account continued.

There was a long battle before HS2 would admit to any damage of the river bank. Temporary repairs have now been made and we will be offering further advice regarding long term restoration of the area.

We continue to offer advice regarding developing designs for the permanent infrastructure including viaducts and vent shafts. In September 2020, we published a [position statement](#) on the Amersham vent shaft design, after HS2 contractors repeatedly gave the impression in public webinars that the CCB supported the 'crown of thorns' design. We do not, and believe the design fails to meet the standards set out in the Detailed Design Principles. The Schedule 17 planning submission for this vent shaft is under review at the time of writing.

[Find out more on our website](#)



**Amersham vent shaft looking east – October 2020.
Image Credit: Chiltern Society**

Undergrounding Electricity Infrastructure – conserving the Chilterns natural beauty



The Chilterns AONB benefits from an OFGEM approved scheme which encourages electricity distribution companies to underground overhead power lines within protected landscapes. The Chilterns AONB has 2 main providers – SSE operates in the southern area and develop proposals largely in-house, while UKPN operates from above the M40 and invites proposals for undergrounding from the CCB. During 2020-21 we worked hard to encourage these companies to develop and deliver two ambitious projects within the AONB:

- **Dunstable Downs** – Involves the removal of 7.72km of 33kv overhead wires and 22 steel pylons that march across the beautiful Dunstable Downs escarpment very near to the popular Gateway Centre. Works started early in 2021 and we are pleased to report that the UKPN team worked very hard throughout the year, resulting in all pylons removed and cables installed under ground in December 2021. The amazing views are now even better and is no longer be any danger to kite flyers or gliders.
- **Latimer/Chenies** – Involves 8.72km of 11kv cable removed from 100 wooden poles on routes beside and crossing the River Chess, one of the Chilterns AONB's rare chalk streams. The work will improve the beautiful river valley landscape while also removing the risk of bird strike, which happens all too frequently. The UKPN team has been collecting landowner consents and drawing up plans and the project will now be delivered in 2022.

Mend the Gap – healing the scars of rail electrification



This project will help to reduce and compensate for the visual harm done to the Chilterns and North Wessex Downs AONs by the electrification of the Great Western main line, where it runs through the two AONBs. Programme Manager, Jo Watson, was appointed in March 2020 to manage the £3.75m project funded by Network Rail.

Jo is working with the CCB, North Wessex Downs and Railway Action Group to identify suitable practical projects to both mitigate the adverse visual impact along the affected rail corridor and to enhance the landscape and restore and increase the biodiversity of local fauna and flora.

Work will include planting of trees and screening vegetation to reduce the visual impact of the electrification infrastructure, as well as projects that will enhance and strengthen the fabric of the landscape and its wildlife, scenic, historic and amenity value within the wider corridor of the electrification works.

[Watch the programme video](#)



Electrification gantries, March 2016

[Find out more on the project page of the website](#)

Planning and development

It has been a year of significant change for planning in the Chilterns and nationally. Following the departure of our planning officer of 5 years, Lucy Murfett, for South Oxfordshire District Council in March, our consultant planning advisor Mike Stubbs kept things going until our new planner, Matt Thomson, joined us at the end of June.

National planning reform was very much on the agenda, and responded to several consultations of planning law and policy, coordinating with the National Association of AONBs, including on the [Government's Planning White Paper](#). Some of these have resulted in changes, including a new way of calculating local housing need, which included an unforeseen increase by one third for the housing requirement around Reading. New national design guidance was introduced, the impacts of which – positive or negative – have yet to be understood. Pressure from the family of protected landscapes did lead to a small positive policy change in the NPPF, giving greater clarity that development in the setting of the AONB should be sensitively located and designed. A lot more planning reforms are anticipated during 2022.

We attended sessions of the South Oxfordshire Local Plan examination, and responded to its [final modifications consultation](#). While the Inspector supported the council's policy (which we supported) of directing strategic growth away from the AONB, he amended the plan to prevent development being limited in towns and villages within and adjacent to the AONB, asserting there was no evidence development would necessarily be harmful to the landscape.

During 2020-21 the CCB commented on around 100 planning applications



Planning and development continued



The draft [Dacorum Local Plan](#) was published for consultation, proposing significant housing development adjacent to and in the setting of the AONB around Tring, Berkhamsted and Hemel Hempstead. We were not alone in objecting strongly to these allocations (progress with the plan is now delayed, which is not necessarily a good thing). On the plus side, Dacorum Council are pulling out all the stops to understand the potential for development to harm the Chilterns Beechwoods SAC, and identify means by which to avoid or mitigate that harm.

We responded to consultations on regional transport strategies for [England's Economic Heartland](#) (which covers the whole of the Chilterns and the Oxford-Cambridge Arc) and Transport for the South-East (which covers the adjacent area south of the Thames, but impacts on the Chilterns). The former strategy has since been approved. We also commented on local transport plans for Reading and Oxfordshire. All of these were considered in the context of a joint policy for transportation agreed informally between us and the Chiltern Society.

On the more local level, we have offered views on a number of neighbourhood plans, including formal consultation responses on the plans for Lewknor, Wallingford and Kidmore End, all in South Oxfordshire. We made formal comments on around 100 planning applications across the Chilterns, as well as providing informal or pre-application advice to many more.



PEOPLE AND SOCIETY

*Supporting rural businesses and creating
a welcoming countryside for everyone*

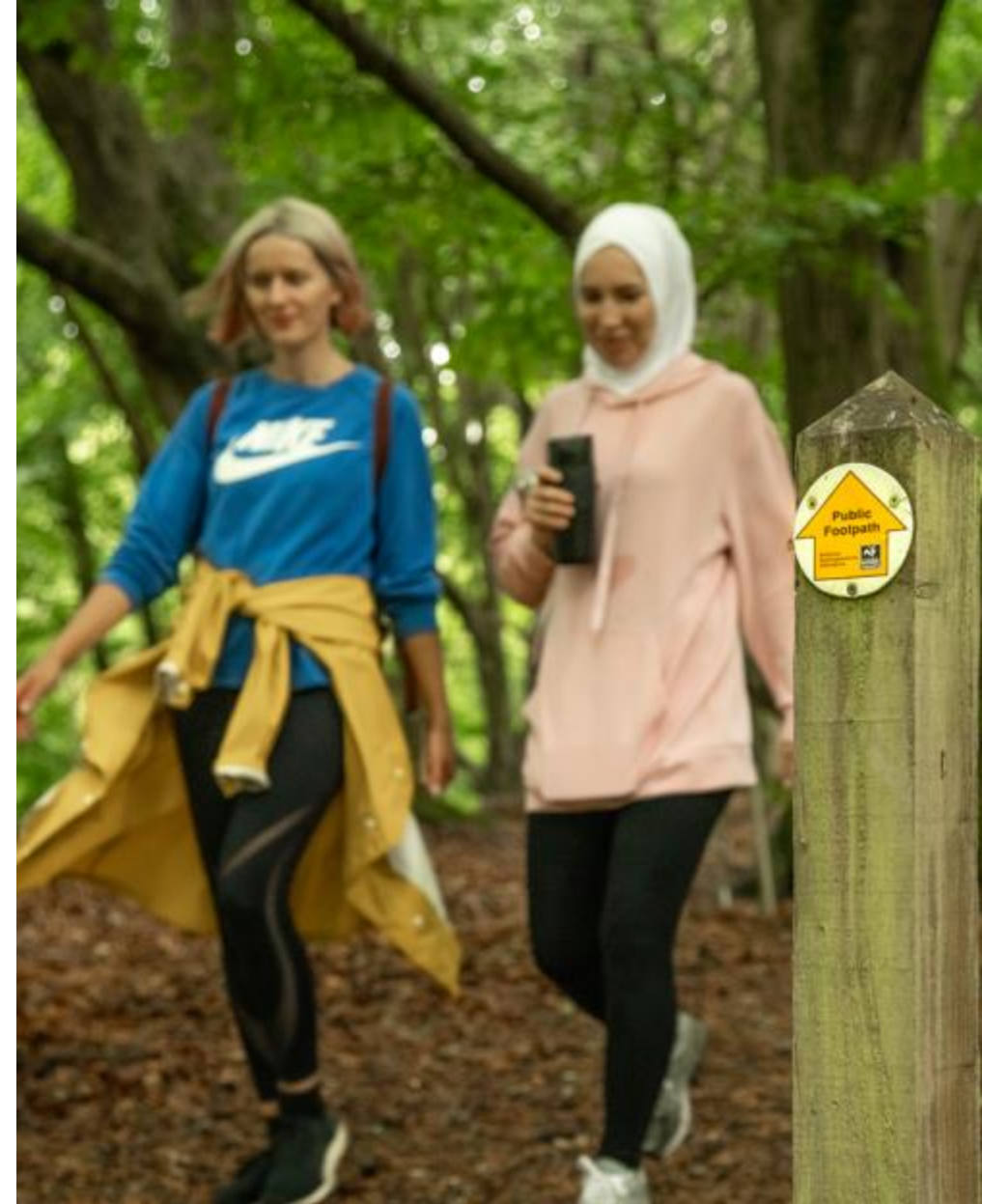


CHILTERNS
CONSERVATION BOARD

People and Society

It has been a challenging year due to the Covid-19 lockdowns and the impacts on countryside recreation, visitor management and the hospitality sector. But new opportunities arose too. The countryside was used as never before and attracted new audiences to explore and discover their local greenspaces. We responded by developing a number of new initiatives to address these changing needs:

- Promoted 'Shop Local' with a [guide](#) to businesses offering delivery service or click & collect during lockdowns, including farm shops, community shops, farmers markets and microbreweries.
- Produced a series of 23 Social Distance friendly walks in partnership with the Chiltern Society and with substantial input from volunteers. See case study on slide 29.
- Disseminated government guidance and [communications](#) regarding Covid-19 and countryside access. We promoted the Countryside Code and developed a series of '[respect the countryside](#)' media campaigns in partnership with partners and local farmers. These achieved extensive media coverage.



Chilterns Walking Festival



The Covid-19 pandemic meant that the May 2020 Chilterns Walking Festival had to be cancelled, but the autumn Festival was able to go ahead with additional safety measures in place. The event was extremely well received, especially after the many months of lockdown. The festival offered 65 walks and events, with a particular focus on health and wellbeing walks, and attracted a total of 624 participants. The local economy benefited with 57% of participants using a local business before or after their walk, and 47% discovered new parts of the Chilterns during the Festival.

We developed a number of blogs and social media campaigns in conjunction with the Festival, including [‘How to look after your health and wellbeing’](#) tying in with World Mental Health Day.

Walking Festival quotes and feedback

"We are so pleased to have been included in the Open for Business programme through participation in the Chilterns Walking Festivals and we have benefited from inclusion in the 'Family fun' blog and social media. These activities have helped to bring in additional visitors and raise awareness of our farm". **Kew Little Pigs, March 2021**

"The combination of walk & paint was very well received. There were 2 pairs of friends and a mum & daughter, so a lovely way to spend time with loved ones outdoors and then indoors doing something creative" – **Participant feedback**

"Everyone seemed to enjoy their walk and a round of applause was given on both tours. Walkers asked how they could book for next year already!" – **Walk leader feedback**

"We have been involved with the Open for Business programme from the start. We have benefited from communications campaigns promoting our farm shop and café. This continued during lockdown with the focus on home delivery and click & collect. This along with the Chilterns Celebration has generated additional business at a difficult time". **Jim Mackellar, Owner, Orchard View Farm in Meadle, Jan 2021**



Open for business – promoting the local economy in the Chilterns



The hospitality and attractions sector was one of the hardest hit by the pandemic. We collaborated with the Chilterns Tourism Network and Visit Buckinghamshire to keep businesses updated, signpost them to business support and grants, promote virtual visiting and Shop Local during lockdowns.

In addition to this we continue to support the local economy by

- ✓ Promoting 'Shop Local' and local produce – farmers markets, community shops, farm shops
- ✓ Engaging with businesses along walking and cycling routes and promoting walks with cafes
- ✓ Developing new food and drink themed trails and itineraries
- ✓ Promoting and developing Chilterns countryside experiences

Outcomes

- Supported 43 businesses through inclusion in our communications campaigns, Chilterns Walking Festival and networking events. This included five new business start-ups.
- Held two online business networking events attended by 31 businesses.



Promoting the local economy



GET READY FOR A CELEBRATION OF CHILTERN'S FOOD & DRINK THIS OCTOBER



beginners, a range of Nordic walking and a Mindful walking experience around Aylbury, allowing you to really immerse yourself in your outdoor experience by tuning into all your senses.

Wildlife and Nature... Join Katrina Hughes for a fascinating journey through the world of mushrooms in Penn Wood looking at their mythology and relationship with the forest and other life forms. Bird lovers will enjoy the Wiltshire Reservoir Wildlife Wander with the Wildlife Trust, or join Steve at GG Wildlife Experiences for some kingfisher spotting along the Thames. Natural England invites you to discover Barton Hills Nature

Chilterns AONB @ChilternsAONB · 4h

You can't beat a [#walk](#) in the [#countryside](#) & the promise of homemade local produce at a [#cafe](#) along the way!

Read our top picks of [#chilterns](#) cafes with walks, all with outdoor seating in beautiful locations [bit.ly/3yXi4zC](#)


[#shoplocal](#) [#visitchilterns](#) [#getoutside](#)



Supporting businesses and new initiatives through festivals and events

Midsomer on the Misbourne:
Great Missenden to Amersham

 Saturday 16


 10.45am


 4.5 miles

Walk (4802)

Launching the new Midsomer Murder locations trail, this walk visits the locations for three episodes of Midsomer Murders in Great Missenden and five episodes in Little Missenden. A walk along the river Misbourne and past Shardeloes Lake takes us into Old Amersham used for locations in the very first episode.









Kew Little Pig walk

 Monday 18

 10am

 1.5 miles

Walk (4201)

Spend some time walking around our Miniature Pig farm in Old Amersham, Buckinghamshire. Our piggies love a cuddle, and love people! You will be walked around the farm meeting our pigs and learning all about them.



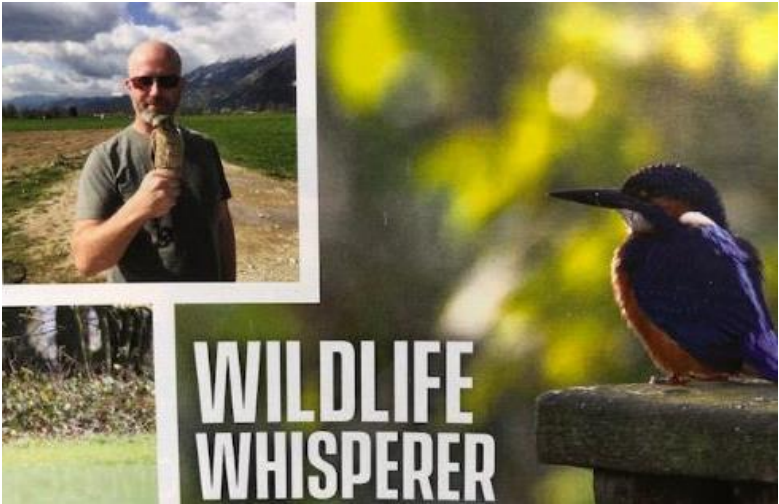




Adults £5 Senior £4 Child £3



Chilterns taster - farmshop lunch & landmarks loop with Ridgeway Trail officer (0007)



CHILTERNS
CONSERVATION BOARD

Response to consultations

We prepared responses to the following national consultations and reviews:

- All Party Parliamentary Group for Hospitality and Tourism: Pathways to Recovery Consultation
- Natural England's consultation on the Countryside Code
- DCMS review of Destination Management Organisations

Looking ahead, we plan to capitalise on green recovery funding and to ensure that our rural economy also benefits from new funding available. We are also involved with developing some major new access initiatives (e.g. the Misbourne Greenway) which will create opportunities for local leisure as well as wider sustainable tourism opportunities. This forms part of our activities responding to the increased demand for staycations in rural areas.



CHILTERNS
CONSERVATION BOARD

Case Study: New Social Distance Friendly Walks – Responding to the Covid crisis

Overview

During the Covid-19 lockdowns the Chilterns countryside was used and enjoyed as never before, bringing comfort and joy to many, but creating intense visitor pressure problems at honey pot sites. Overcrowding made it difficult to socially distance, as well as putting pressure on the landscape. In response, we worked with the Chiltern Society to design 23 social distance friendly walks, accessible for many and away from busy areas and avoiding narrow paths. Most of the walks start in market towns or villages, with good public transport links or parking facilities. For each of the walks we produced a map, walk description and visitor information.

Outcomes

We issued a press release and promoted the walks via social media. This achieved extensive media coverage including being featured in the Independent's seven great days out for the family, in July 2020. We saw some of the best ever engagement on our social channels. Our Facebook post achieved 29,200 organic impressions, 3,500 post clicks, 756 reactions, comments and shares. This, when compared to our average engagements shows a percentage increase of 2800% for comments likes and shares. Our Twitter launch post achieved 6517 impressions and 607 engagements – 9.3% engagement rate was a 220% increase on our average engagement rate. Clicks to our e-newsletter totalled 537, a 32% increase in engagement compared to our average.

[Click here to view the Social Distance Friendly Walks](#)



“This was a true collaborative effort, it was done on a minimal budget and relied on the commitment and passion of a large number of volunteers. The walks were successful on many different levels – visitors enjoyed exploring less visited part of the Chilterns, but also important for visitor management, diverting people away from overcrowded honey pot sites.”

Annette Venters, Chilterns Conservation Board



COMMUNICATIONS

Sharing our work and engaging new audiences



CHILTERNS
CONSERVATION BOARD

Communications

The communications team adapted quickly in response to the Covid-19 pandemic. We created content to inspire and educate new visitors and provide the [latest government guidance](#) to keep them safe during uncertain times. We also provided tools to help people improve their wellbeing by [connecting to nature and the wider landscape from home](#). As the lockdowns started to ease, we created a series of blog posts linking to safe activities including [Covid-19 safe family friendly days out](#), [things to do at Halloween](#), the [best places to visit with children during winter](#), and [shopping local on Mothering Sunday](#). We also regularly updated our guidance on [staying safe](#) as lockdown eased and our flagship magazine, Outstanding Chilterns, provided an interesting array of articles to promote the local economy and drive footfall to the Chilterns area.

Outcomes at a glance

- Website: 1.4 million page views, 447,136 individual users – almost 5,000 active users on one day in May 2020.
- 723 new Twitter followers with 4,625 mentions and 702,710 impressions
- 11% increase in e-newsletter subscribers



FINANCES

Our financial year and more about us

Our Financial Year

Income

DEFRA	£	455,405
Local Authority Contribution	£	156,551
Project and other Income	£	453,992
Total Income	£	1,065,949

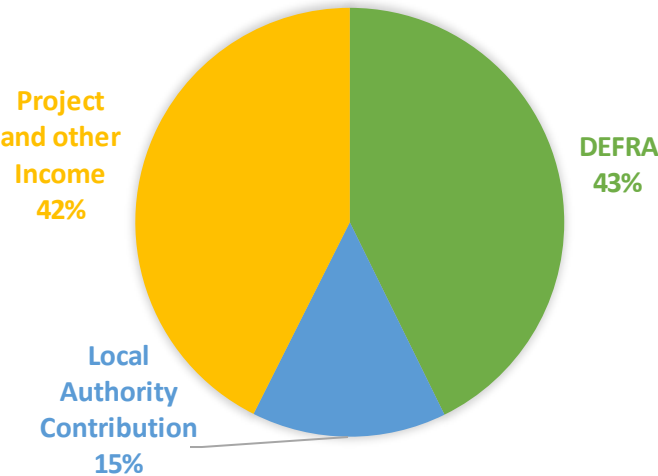
Expenditure

Overheads	£	200,670
People and Society	£	231,450
Landscape and Conservation	£	534,512
Planning and Development	£	111,656
Total Expenditure	£	1,078,288

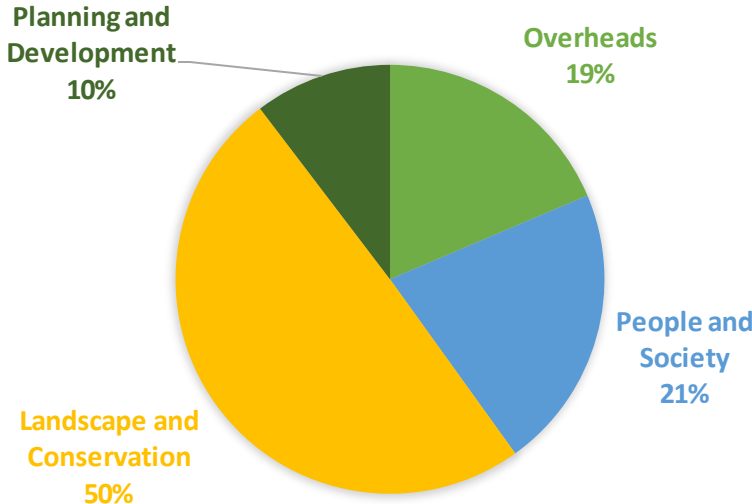
Deficit

Total Income	£	1,065,949
Total Expenditure	£	1,078,288
Deficit for year	£	12,339

INCOME



EXPENDITURE



Total Income vs Total Expenditure





About us

- The Chilterns is designated an Area of Outstanding Natural Beauty in recognition that it is one of the finest landscapes in England. The Chilterns Conservation Board is responsible for caring for this special landscape and to work to fulfil our statutory purposes and duty, which are:
 - To conserve and enhance the natural beauty of the Chilterns AONB.
 - to increase understanding and enjoyment of its special qualities.
 - To foster the social and economic wellbeing of local communities.
- Established by Parliamentary Order in 2004, the Chilterns Conservation Board is an independent body and one of only two Conservation Boards in the country, the other being the Cotswolds.
- Our board comprises 27 members drawn from local authorities, parish councils and appointments made by the Secretary of State at the Department for Environment Food and Rural Affairs. See our list of Board Members [here](#)
- Our staff team is based in Chinnor, Oxfordshire and comprises individuals with a wide range of skills and expertise including ecologists, planners, archaeologists and tourism professionals.

Thank you

Thank you for reading our annual review 2020-21. Please contact us if you would like any further information on any of the work highlighted in this report.

Contact us

Chilterns Conservation Board

The Lodge
90 Station Road
Chinnor OX39 4HA

Telephone: 01844 355500

Email: office@chilternsaonb.org

Keep in touch

Keep up to date with the latest news and information from the Chilterns Conservation Board and the Chilterns AONB by following us on social media:

[Twitter](#)

[Facebook](#)

[Instagram](#)

[LinkedIn](#)

