



Chilterns Conservation Board Annual Review 2021-2022



Welcome from our Chairman



Welcome to the Chilterns Conservation Board (CCB) annual review 2021-22, reporting on our work to conserve and enhance the Chilterns Area of Outstanding Natural Beauty, and to increase the understanding and enjoyment of its special qualities by those who visit, live or work in or close to the landscape.

Some could describe 2021 as a year of two halves; the first spent supporting local businesses as they seek to recover from the effects of the Covid-19 lockdown, and the other making up for lost time with an abundance of practical conservation work and initiatives. Early in the year, we were delighted to provide workshops for businesses to learn how to create their own immersive experiences, providing opportunities for people to meet the local community and come away with unforgettable memories.

We were also pleased to work with many farmers and landowners, providing help and support for them to improve the wildlife on their farms through the Farming in Protected Landscapes Programme. Our Chalk, Cherries and Chairs Landscape Partnership has also seen some fantastic community-based activities, from amphibian and reptile surveys, hedgehog projects and orchard restoration. “Rough around the Edges” is a great example of how our projects are helping people connect to the landscape and learn new skills. We are also pleased to have set up a working group looking into ways in which we can work together to increase inclusivity and encourage people from diverse backgrounds to connect with and feel part of the Chilterns landscape.

As you will see throughout this report, we have many achievements of which to be proud. However, there are still challenges and pressures facing the AONB, increased pressure for new housing and infrastructure, the destruction of ancient woodlands, species and habitats as High Speed 2 railway passes directly through the Chilterns, along with extreme concern for our fragile Chalk Stream habitats.

We will continue to work hard to care for our special landscape, so that we can continue to enjoy and appreciate it now and for generations to come.

A handwritten signature in black ink, appearing to read 'Paul Mainds'.

Paul Mainds BEM, Chairman

A note from our CEO

2021 was a big year for the Chilterns Conservation Board. Locally we were delighted to be able to resume our practical conservation work and organise community events and festivals, after such a long period of inaction due to the covid pandemic. Our teams have been busy making up for lost time and it's wonderful to read in this report all the great progress they have been making.

Nationally, there were big changes too. In June 2021, Natural England announced that it would explore extending the Chilterns AONB boundary and work with us on enhancing how the landscape might be better managed in the future. In Spring we were also pleased to offer our views on the Government's Response to the independent review of Protected Landscapes (the Glover Review).

The review had set out a once-in-a-generation opportunity to understand and improve the vital role of Protected Landscapes in England. The Chilterns Conservation Board welcomed many positive proposals in the Government's response, making clear the urgent need for improved purposes, powers and resources. We are now talking with the Government about how this might be achieved.

With all the challenges and opportunities facing us, we certainly have another very busy year ahead, and I'd like to thank our team, partners and volunteers for all they are doing - I am very grateful.

**Dr Elaine King, Chief
Executive Officer**

Elaine King



Table of contents

1. A new future for the Chilterns AONB

- Boundary Extension
- Glover review of Protected landscapes

2. Our Flagship Projects

- Chalk, Cherries and Chairs
- Chalkscapes
- Beacons of the Past
- Chilterns Chalk Streams
- Farming in Protected landscapes programme
- Mend the gap

3. Influencing

- Planning and development
- Holding HS2 to account
- Undergrounding Electricity Infrastructure

4. People and Society

- Walking Festival
- Open for business' – Supporting businesses and promoting the rural economy
- Green recovery
- Promoting active outdoors

5. Communications

- Increasing understanding and enjoyment and engaging new audiences

Finances

- Our financial Year
- About us



A NEW FUTURE FOR THE CHILTERNNS AONB

A new future for the Chilterns AONB – boundary extension

The Chilterns AONB Management Plan 2019-2024 commits us to “Explore the case for and against the Chilterns having enhanced status or being designated as a National Park” and “Review the boundary of the protected area to cover the wider area of the Chilterns landscape that merits it”.

In June 2021, after over a decade of CCB activity, and a flurry of activity around the Government’s Landscapes (“Glover”) Review, Natural England committed resources to working with us on both a boundary extension and exploring enhanced management and governance arrangements for the Chilterns. Natural England are now managing the extension project, and are currently identifying an area of search, ahead of appointing consultants to undertake assessment work, beginning in Autumn 2022.

We are also working with them to define the parameters of the work to enhance our management and governance arrangements. There is a big overlap between this and both CCB’s internal Governance Review and Defra’s implementation of the wider recommendations of the Glover Review (see next page). The project puts CCB in the vanguard for a new model of governance for protected landscapes that could result in better outcomes – and certainly better value for money – than National Park status.

[Find out more on our website](#)



Key things to note

- Combination of CCB’s governance review, Defra’s response to Glover and the new project with Natural England could be a better outcome than being a National Park
- Natural England are running the AONB extension, and work should begin in the Autumn.

A new future for the Chilterns AONB – the Glover review of protected landscapes

January saw the publication of the Government’s long-awaited response to the Landscapes (“Glover”) Review, with an accompanying consultation. The Review had paid particular attention to the Chilterns due to the AONB’s scale and complexity, proximity to major urban areas and pressures for development, and we have actively engaged with Defra, in partnership with the NAAONB, as proposals have been worked up. Nonetheless, the proposals put forward by Government did not match the ambition for transformational change embodied in Glover’s recommendations.

Our response to the consultation supported that made by the NAAONB, adding local examples and emphasising the particular issues faced both by Conservation Boards (under-recognised in the government’s response) and by landscapes in high pressure areas. Our response focused on the measures necessary to support Glover’s Proposal 24 – that AONBs be ‘strengthened with new purposes, powers and resources’, and made the case that protected landscapes are critical components of the nation’s social, economic and environmental infrastructure, as highlighted during the Covid-19 pandemic.

[Read more about our submission to the glover review consultation](#)



Key things to note

The discussion will carry on: nothing that the Glover Review proposed, or was proposed in the Government’s Response, has been carried across into the Levelling-Up and Regeneration Bill (published in May 2022), including the reforms to planning law that are critical to the future management of protected landscapes. Watch this space.



OUR FLAGSHIP PROJECTS

*Collaborative and ongoing action for
the nature, heritage and communities of the Chilterns
Landscape*



CHILTERNS
CONSERVATION BOARD

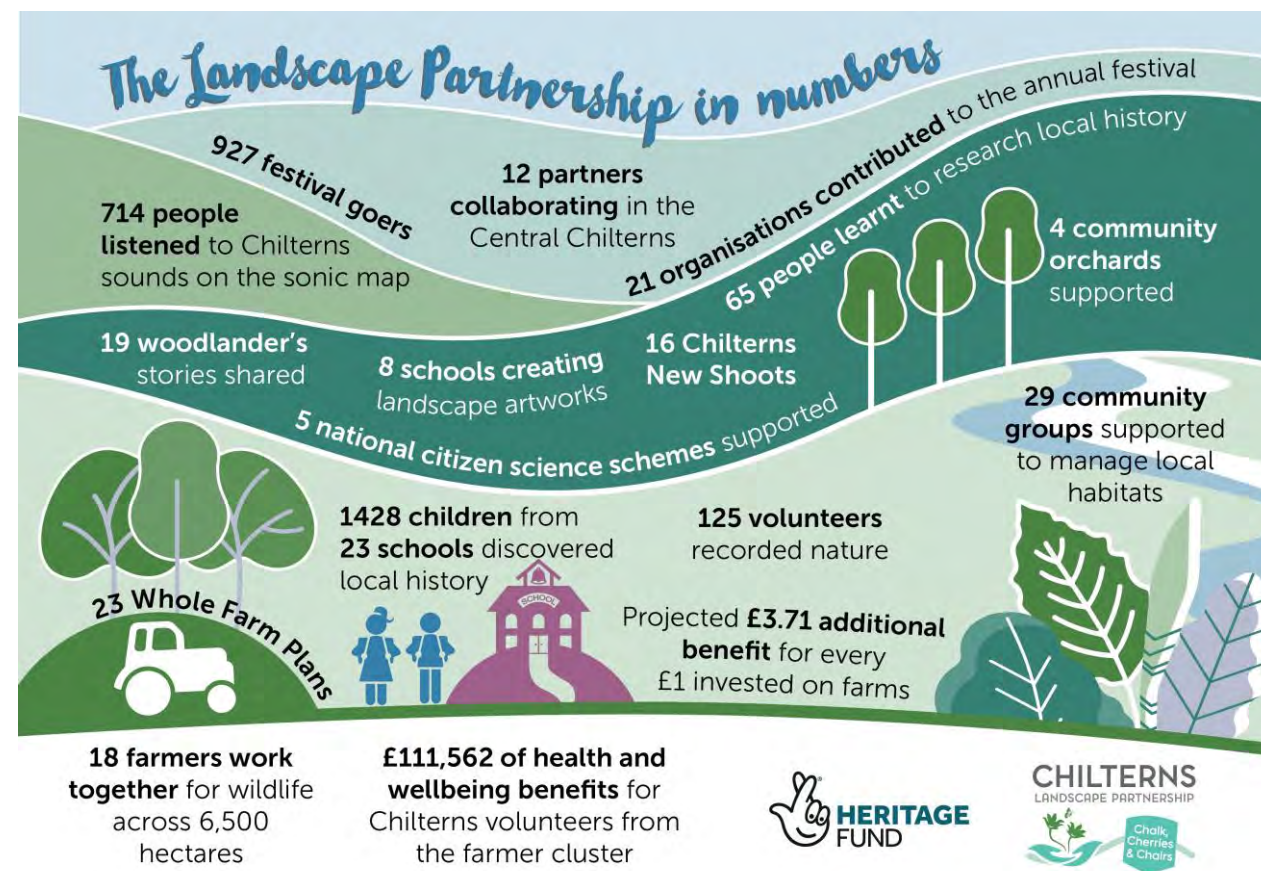
A scenic landscape photograph featuring a wooden fence in the foreground, lush green trees and bushes, and a small building in the distance. The text "Chalk, Cherries and Chairs: Landscape Partnership" is overlaid in green on a white rectangular background.

Chalk, Cherries and Chairs: Landscape Partnership

Summary

April 2021- March 2022 has seen huge success from the Chalk Cherries and Chairs Landscape Partnership, which has almost fully made up for impetus lost over the preceding national lockdown, almost halving the projected underspend overall from over 65% to less than 38% over the year by, especially, making even more efficient use of the time limited HS2 funding.

Individual projects such as Landscape Connections have hit their full stride, others such as Woodlander Lives have recovered their pace and most of the rest have been adapted to recover and deliver within planned timescales. Most of the quantified outcomes listed here have been achieved over the last year alone. Of particular note are the extensive habitat creations and restorations, the growth in participation including wildlife surveys, the initiation of an award-winning trainee programme, the evolution and growth of our festivals and the international traction of specialist volunteer work on crafts and skills.

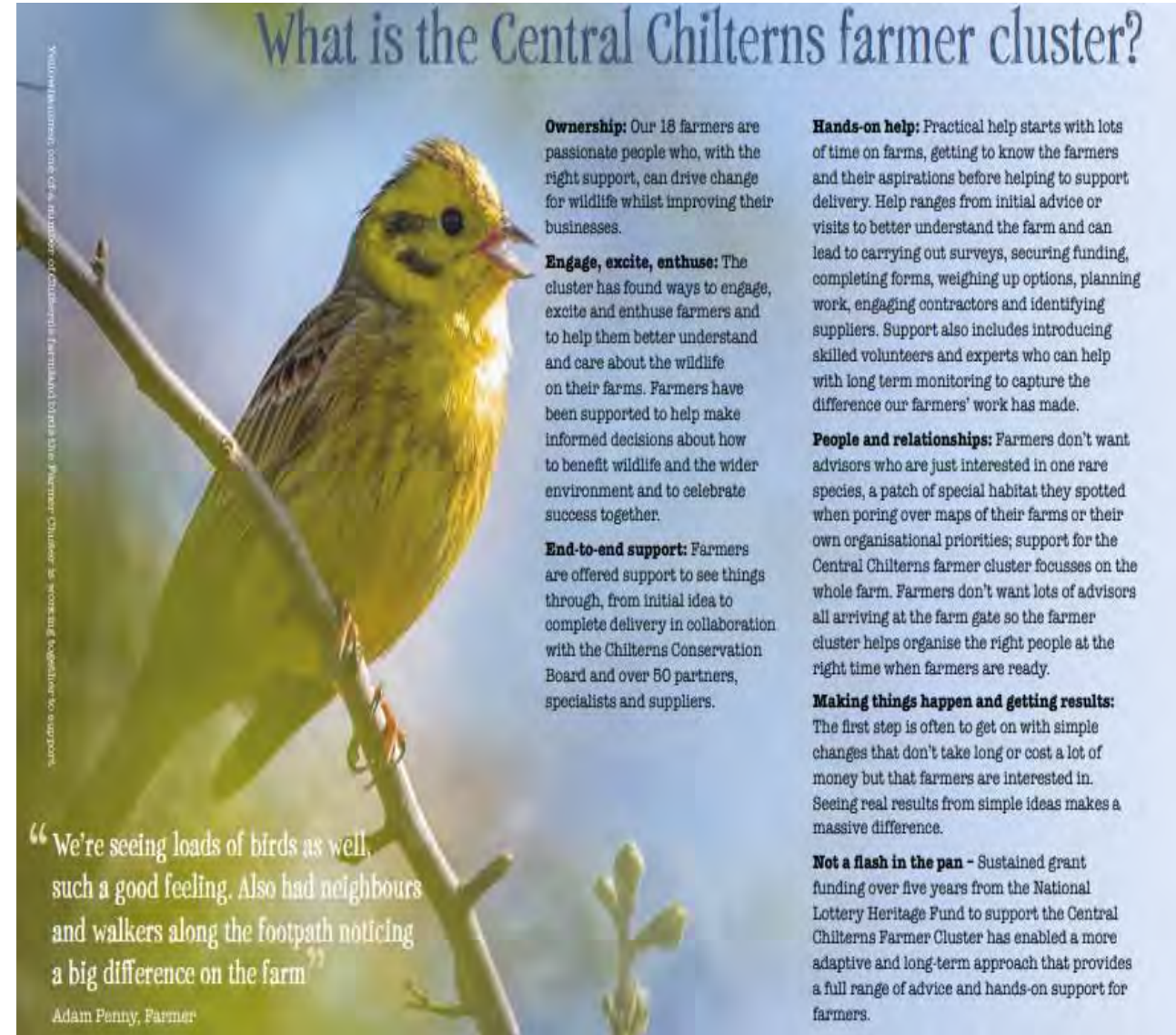


Chalk, Cherries and Chairs: Wildlife and Nature

Our earlier development of whole farm habitat management plans through the provision of end-to-end support with the 18 farms in our farmer cluster have borne fruit this year across an areas covering 6,500 ha of the Central Chilterns landscape.

Half of our cluster farms have newly entered either the Countryside Stewardship scheme or the Sustainable Farming Initiative and are now in receipt of central government funds to maintain their commitment to sustainable agricultural practises and land uses. The hedgerows and orchards we are planting with protective fencing and gates are repairing and extending the connected network of wildlife corridors and habitats across the whole area.

Within the cluster farms, five botanical surveys and nine hedgerow surveys have been completed and new management plans for 3 Sites of Special Scientific Interest, 14 grassland sites, two orchards and two ponds have been completed.



What is the Central Chilterns farmer cluster?

Ownership: Our 18 farmers are passionate people who, with the right support, can drive change for wildlife whilst improving their businesses.

Engage, excite, enthuse: The cluster has found ways to engage, excite and enthuse farmers and to help them better understand and care about the wildlife on their farms. Farmers have been supported to help make informed decisions about how to benefit wildlife and the wider environment and to celebrate success together.

End-to-end support: Farmers are offered support to see things through, from initial idea to complete delivery in collaboration with the Chilterns Conservation Board and over 50 partners, specialists and suppliers.

Hands-on help: Practical help starts with lots of time on farms, getting to know the farmers and their aspirations before helping to support delivery. Help ranges from initial advice or visits to better understand the farm and can lead to carrying out surveys, securing funding, completing forms, weighing up options, planning work, engaging contractors and identifying suppliers. Support also includes introducing skilled volunteers and experts who can help with long term monitoring to capture the difference our farmers' work has made.

People and relationships: Farmers don't want advisors who are just interested in one rare species, a patch of special habitat they spotted when poring over maps of their farms or their own organisational priorities; support for the Central Chilterns farmer cluster focusses on the whole farm. Farmers don't want lots of advisors all arriving at the farm gate so the farmer cluster helps organise the right people at the right time when farmers are ready.

Making things happen and getting results: The first step is often to get on with simple changes that don't take long or cost a lot of money but that farmers are interested in. Seeing real results from simple ideas makes a massive difference.

Not a flash in the pan - Sustained grant funding over five years from the National Lottery Heritage Fund to support the Central Chilterns Farmer Cluster has enabled a more adaptive and long-term approach that provides a full range of advice and hands-on support for farmers.

"We're seeing loads of birds as well, such a good feeling. Also had neighbours and walkers along the footpath noticing a big difference on the farm"

Adam Penny, Farmer

Yellowhammer: one of a number of Chilterns farmlandbirds the Farmer Cluster is working together to support.

Chalk, Cherries and Chairs: Wildlife and Nature

The Central Chilterns farm cluster is an innovative model of future working in partnership with landowners, farmers, ecologists and volunteers.

11 of our cluster farms have welcomed volunteer working parties, with activities ranging from scrub clearance, owl box installations and woodland planting. Additional landscape scale habitat work has also taken place on connected sites around the farm cluster, which has itself been evaluated and presented to Defra as a case study.



What could the future look like?

Motivated farmers:

- Say how proud they are about the habitat they have created and tell a story about wildlife thriving on their farms to whoever will listen!
- Now have and recognise fantastic wildlife including breeding farmland birds, more butterflies, pollinators and more diverse grassland and arable field margins
- Lead their own workshops for others on how to manage their farms for wildlife
- Look forward to the cluster meetings where they get to know other farmers and share ideas.

Showcasing farming's role in Nature's Recovery:

- Farmers share stories about how they have worked together to connect their hedgerows, field margins and woodland and how they have better managed chalk grassland and semi improved grassland
- Springwatch 2030 is filmed from a single Chilterns farm showcasing the thriving farmland wildlife.

Scale of delivery:

- Hundreds of miles of field margins and hedgerow are planted and better managed along with woodland and grassland
- High levels of engagement with Environmental Land Management (ELM) so furthering progress towards the aims set out in the government's 25 Year Environment Plan for environmental improvement
- Every farmer in the Chilterns has access to a fully supported Farmer Cluster
- AONBs report on the impact they have made by rolling out similar projects rolled out across all protected landscapes to help nature's recovery.

Increased investment:

- Farmers access a wide range of funding to help support their farms and to deliver wildlife, carbon and sustainability projects.

Changing the landscape of farming:

- Farmers report how their yields have increased and farms become more profitable with better quality soils

and an increase in carbon sequestration

Better partnership working:

- All conservation organisations report how they have developed genuine partnership approaches to supporting farmers
- Farmers say what a difference ecologists and volunteers have made to their farms and how they respect them and welcome them onto their farms.

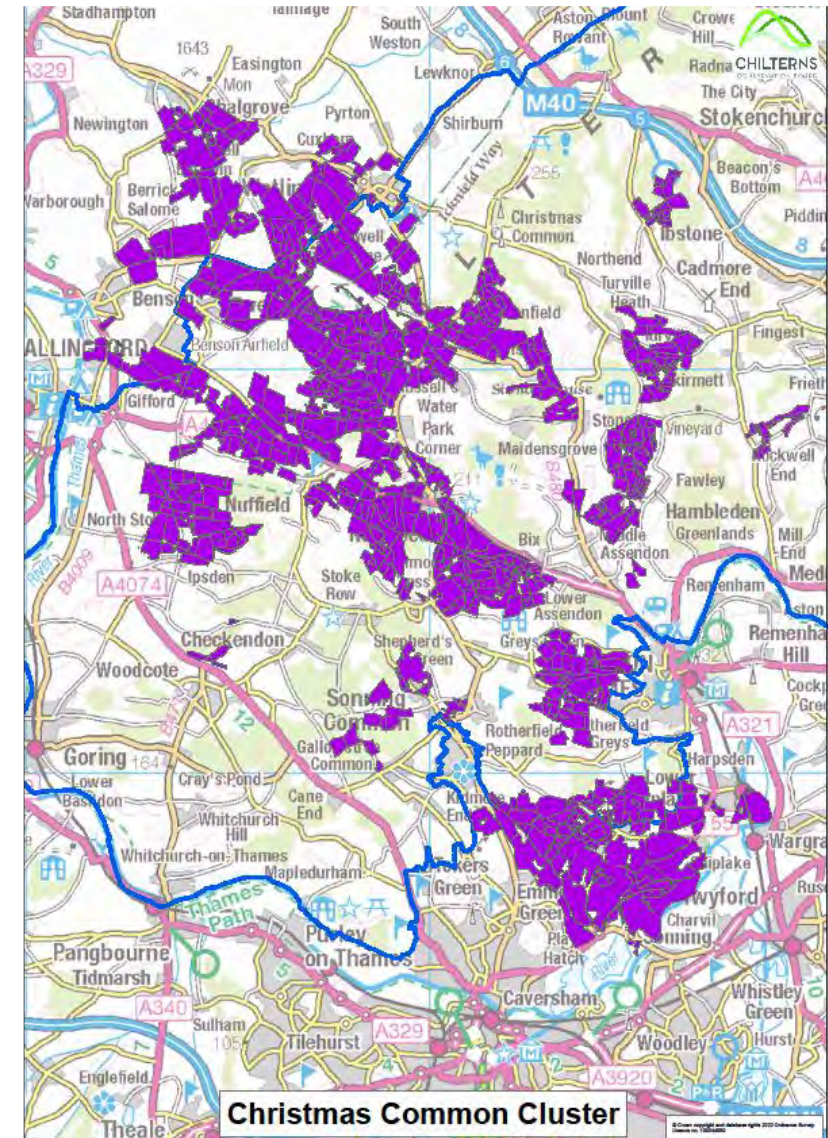
Farmers sit back and say 'we have created more, bigger, better and better connected habitats and landscapes; we made that happen and it all started with a pie and a pint on a cold wet, February evening...'

Farm Clusters within the Chilterns

Building on the success of the Central Chilterns Farm Cluster, we are keen to take opportunities to roll out this model of supporting our farmers elsewhere in the Chilterns.

For the last few years we have been assisting the facilitator of the Christmas Common Farm cluster which has grown to 28 members covering over 8,618 ha of land within the AONB and its setting. Cluster members decide their own priorities and workshops over the last year have looked at deer management, carbon accounting and hedgerows.

We are actively looking at ways to initiate clusters in the north Chilterns (see our Chalkscapes Project) and within the River Chess catchment (see the River Chess Smarter Water Catchment Project).



Chalk, Cherries and Chairs: Wildlife and Nature

The landscape scale conservation work of Chalk, Cherries and Chairs is complemented by smaller scale projects focused on restoration and management of the smaller green and blue spaces in our landscape.

In Rough Around the Edges, delivered in partnership with the Berkshire, Buckinghamshire and Oxfordshire Wildlife Trust, we have worked with more than 30 community groups and organisations on sites including the Donkey Lane Orchard in Chinnor, the Holmer Green village pond, the burial ground at West Wycombe Hill, the walled garden in Great Missenden and Widmer End Common, where we train volunteers and engage them in restoring and managing natural habitats.

Our work on chalk streams has also progressed now that Horsenden Brook has been identified as the best site for conservation and management focus. Our work with community organisations is supplemented by a Small Grants scheme, with initial grant applications from groups like the Lindengate community orchard, Knots and Embers sustainable art workshops and the Aerial Tai environmental music group.

The impact of our nature and wildlife work is measured with annual surveys for birds, insects and plant life. Over this year more volunteer participation has meant we have increased coverage of our surveyed areas from 38% to 82%.



Hedgehog house building at Missenden Walled Garden

Chalk, Cherries and Chairs: New Shoots Conservation Trainee Programme

The first year of New Shoots – our foundation training programme in Nature and Wildlife for young conservation enthusiasts – saw some fantastic results including winning the award of ‘Best Community Group Scheme’ in the NW Buckinghamshire Pride in Bucks awards. The programme has been designed with young people, by young people and for young people (aged 15-20). It is delivered in partnership with Chiltern Rangers.

The young people who participate benefit from:

- Access to the best Chilterns ecological sites
- Expertise from the National Trust, BBOWT, British Trust for Ornithology and other partners
- All-weather fleece, Collins field guides and binoculars
- Skills training and specialist knowledge
- A post-graduation bursary scheme
- Opportunities to meet other young people
- Opportunities to grow in confidence and skills



Applications are now being considered for the second year of the programme, along with two full time apprentice placements.

Chalk, Cherries and Chairs: Wildlife and Nature Summary



- 25 landscape scale sites of managed habitats
- 9 km nature corridor hedgerow planted, coppiced or laid
- Scrub control on 16 chalk grassland sites
- 20 Whole Farm Plans completed
- 13 farms accepted into Defra Countryside Stewardship or Sustainable Farming Initiative scheme
- Phase One of the soil carbon project with Rothschild Foundation
- Brown Trout reintroduction project started at Horsenden Brook
- Local Wildlife Site designation for Manor Farm, Bradenham
- Conference learning rollout for four local farm clusters
- Chilterns Chalk Grassland project
- New Shoots training for young conservation volunteers
- Wildlife survey area coverage doubled in one year
- £245k match funding in Farming in Protected Landscapes partnership

Chalk, Cherries and Chairs: Heritage Projects

Our Chilterns heritage projects and the group of committed volunteer researchers were sustained by online activities organised and managed by Dr Helena Chance from Buckinghamshire New University during the period of lockdown. These activities generated 40 YouTube videos and the publication of more than a dozen fascinating stories, both online and in the local printed media, about the past lives of Chilterns residents.

More than 11,000 people have now watched the online lacemaking video, which generated enthusiastic interest as far afield as the United States. Our census data analysis and further research is laying the ground for more stories and exhibitions currently in the planning stage.



Chalk, Cherries and Chairs: Heritage Projects

In the last year we have been able to facilitate in-person meetings for volunteer social and networking events, for skilled craft demonstrations such as the Lacemaking Taster Day in Lacey Green and guided tours like the Winchmore Hill walks and the Bodgers Pub Tours. Both of which are made accessible through online maps, like those we developed for Wycombe Rye and Amersham town centre.

We lost Sam, our scheme Heritage Officer, last summer, when he returned to Wales. His work on the archaeology of Grim's Ditch will now be taken forward in partnership with the county archaeology team at Buckinghamshire Council, and we have further built on the reinvigorated partnership with Wycombe Museum he initiated with its new Director, Roz Currie.

Our project on the Mills of the River Wye, with the Museum and Chiltern Rangers, is now reaching its end, having delivered the planned outcomes.



Chalk, Cherries and Chairs: Festivals and events

Our Festivals to celebrate the environmental and cultural heritage of the Chilterns goes from strength-to-strength. We have significantly improved our performance over this last year: In the two years to the end of March 2021, we organised 18 events with Eventbrite, but we raised no income from any of them. In the year following, we held 22 comparable events, adding more than £300 to meeting our match funding targets.

In April 2021, within weeks of lockdown ending, we released 'Get Your Boots On', encouraging people to get back outdoors with farm walks, a river clean and hedgehog house building. We organised a 'Family Fun Day' on Wycombe Rye in August 2021 with demonstrations of traditional crafts and skills like pole lathing and lacemaking. In October 2021, we joined with the Chilterns Food Festival to offer chutney making sessions, a coppicing campfire cookout and a Bodgers Pub Tour.



Lacemaking at the family fun day at Wycombe Rye, Aug 21

Chalk, Cherries and Chairs: Festivals and events

Despite the team being busy organising multiple festivals and associated events, and in our hurry to get everyone back outdoors and engaged after the enforced period of lockdown, we recognised and acknowledged our weaknesses and realised we could further improve our performance: we were not raising any of the match funding we needed from organised events. We were losing track of festival participants, we were mixing our booking systems and could not confidently measure our impact. We were also failing to adequately induct, support and nurture our potential volunteers and – in communicating with everyone – we were talking to no-one new.

As a team, we undertook a Project Learning Exercise in June and then, after the August Summer Festival, our communities and communications team set about revising our programme and strategies, focusing on the key audiences of creative communities and engaging with local schools, a universal service, in order to better reflect the local demographics. The result was the first manifestation of our new approach: 'Chilterns Landscapes', an exhibition of landscape paintings and other inspiring artworks from local artists of the past, present and future. We spent the end of 2021 and the start of 2022 organising all the details and with 250 submissions from schools and 50 from contemporary artists, we were ready to open the exhibition by the end of the year. When it happened, almost 1000 people participated.



CHILTERN LANDSCAPES ART EXHIBITION

Inspired by the Chilterns Area of Outstanding Natural Beauty



24th April - 1st May '22 (closed Mon 25th & Sat 30th)

11am - 3:30pm

Wycombe Museum, Priory Avenue, High Wycombe HP13 6PX



Chalk, Cherries and Chairs: Festivals and events

The Festival model we have developed is designed around the concept of “volunteer pathway building”; providing our local communities and schools with opportunities to learn about the landscape and inspiring them to take action by attending an event or, ultimately, volunteering.

For the art exhibition, we asked pupils and artists to celebrate the landscape in their own way. To reward their efforts we provided prizes and displayed their work at Wycombe Museum. QR codes were created and placed alongside the artwork at the exhibition, giving visitors the opportunity to discover and sign-up to upcoming events. For example, Paul Nash's painting of 'Whiteleaf Cross' led directly to information and booking facility for a Chiltern Society guided walk on Whiteleaf Hill Nature Reserve.

Similar “volunteer pathways” will be constructed around the future programme of themed festivals.



CHILTERNS LANDSCAPES ART EXHIBITION

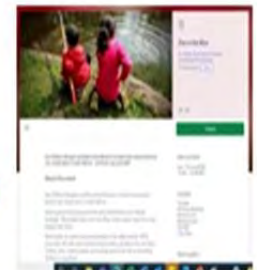
Inspired by the Chilterns Area of Outstanding Natural Beauty



24th April - 1st May '22 (closed Mon 25th & Sat 30th)

11am - 3:30pm

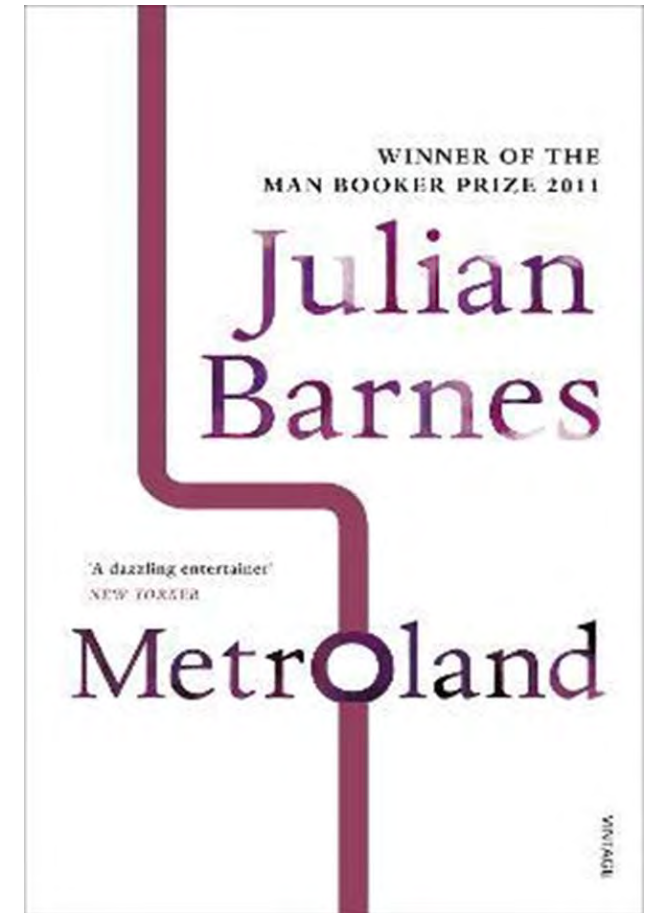
Wycombe Museum, Priory Avenue, High Wycombe HP13 6PX



Chalk, Cherries and Chairs: Future Festivals

As we prepared the art exhibition in late 2021 and early 2022, we also initiated the plans and preparations for a series of future festivals with similarly detailed constructions. These are all now in different stages of their preparation. They will frame our future volunteer pathway building from creative communities and local schools. We will keep learning from our experience to adapt, improve our impact and iron out the system glitches.

- **Jun 22:** Chilterns Wildlife: a series of outdoor summer events with guided nature walks, habitat and farm visits and afternoon tea.
- **Nov 22:** Chilterns Stories: a celebration of our literary heritage with new original written works including 'In Badgers Wood' by Rachel Rooney
- **Mar 23:** Women, Work and the Chiltern Craft Industries: a 6 month exhibition at Wycombe museum and associated conference in Women's History Month
- **Jun 23:** Sour Cherry Soup: script development, theatre workshops and touring performances of an original play exploring out dynamic Chilterns communities through the metaphor of changing cherry orchards
- **Oct 23:** Chilterns Chalk and Cheese and Wine: a digital and visual media festival celebrating various aspects of Chilterns chalk, with music video featuring original work and Ivinghoe Beacon Choir
- **Mar 24:** Chilterns Chair Design: an exhibition of commissioned originals from local craftspeople and designers including Ercol, Hands of Wycombe and Bates & Lambourne



Chalkscapes: North Chilterns Landscape Partnership



Chalkscapes Landscape Partnership Project



Since receiving initial support of £262,600 from the National Lottery Heritage Fund in December 2020, project plans for the Chalkscapes Landscape Partnership have gone from strength to strength.

The development stage has so far proved that the project is not only vital for the local environment but also the communities that it serves. We have begun working with several new partners over the development stage to assist us in forming the foundations of the project and steer its direction, including outreach to local schools and diverse community groups.



One key piece of work which has taken place over the past year was a Species Dossier, completed by Plantlife. The work completed provided management prescriptions for key chalk species/microhabitats, and will help to identify priority locations for Chalkscapes investment, which will help take forward the Chalkscapes Delivery.

Chalkscapes Landscape Partnership Project cont.

In addition to the Species Dossier, a North Chilterns Farmer Cluster has also been created, in the hope that we can emulate the success of the central Chilterns cluster. One gathering has been held so far, and 14 farms were represented, with approximately 20 people in attendance. We are also hoping to secure some FiPL funding to deliver an initial package of events for the cluster members, over the next 12 months, to get them all enthusiastic and ready to hit the ground running with more activities in Chalkscapes delivery.

Another highlight of the development plans is a key piece of new research, which has been highlighted in *Made At Uni's* latest campaign, 'Climate Action'. "Chalkscapes: Co-creating solutions with diverse communities using green spaces", will evaluate access to and use of green spaces among minority ethnic communities living in Luton and Dunstable.

The project team are aiming for submission in February 2023 with a view to begin the delivery, should it be successful, in June 2023.

[Find out more on the project page of the website](#)



Beacons of the past: Understanding the Chilterns Iron Age Hillforts



Beacons of the Past – Hillforts Project

A lot has happened over the past year - we said goodbye to Ed Peveler in the Spring, and had Giles Carey join our team. Between them, we were able to supply the four counties of the AONB with a massive amount of data to help protect new archaeological sites. Giles moved on in the late summer, and Ed has now returned to help as a contractor. We have been fortunate to have two such capable and talented colleagues on this project. And of course none of the things we achieve could happen without all of our wonderful volunteers and project partners.

In April 2021, project manager Dr Wendy Morrison gave a talk as part of the Chilterns Conservation Board's "Farming in the Chilterns Webinars" series (which was kicked off by the excellent James Rebanks, author of English Pastoral). Wendy's subject was "Understanding the history of your farm" and covered resources and approaches landowners could use to find out more about the history of the land which they own or on which they work.



Children at the Burnham Beeches Open Day

Wendy was also filmed by the TV network CGTN for a short piece on the project, which you can watch [here](#). In October Wendy undertook a week-long solo excavation of Seven Ways Plain at Burnham Beeches, read on to find out more.



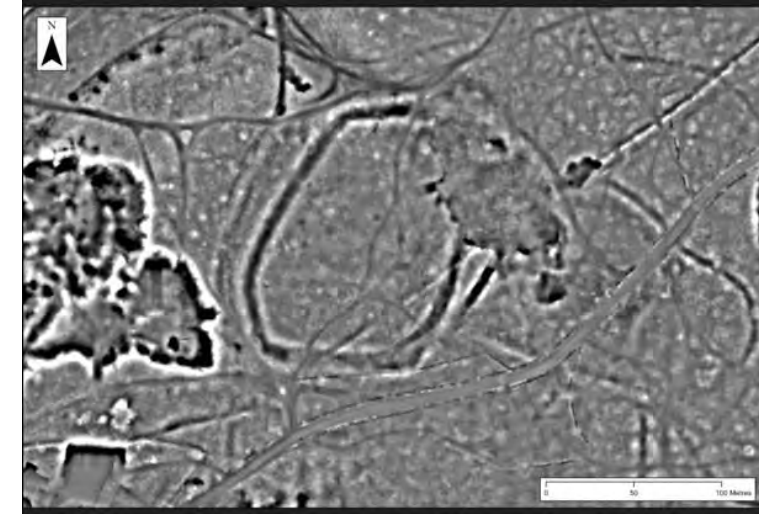
Beacons of the Past – An Autumn Excavation at Seven Ways Plain

In October, Wendy undertook a solo excavation of Seven Ways Plain Hillfort at Burnham Beeches. Taking place over a week, Wendy documented each day with a series of videos, taking the viewer from the laying out of the trench, right the way through to backfilling.

The week went well, with well over 500 visitors to see a live dig in action; even the Lord Mayor of London called in with his entourage. A scrap of dating evidence in both the layers of the construction, was found in the form of charcoal. If of sufficient quality and quantity, it will produce radiocarbon dates.



The Lord Mayor's visit on 28th October



Local Relief Model visualisation of LiDAR at Seven Ways Plain hillfort image ©CCB

All in all it was a very successful week of investigation. An interim report will be forthcoming and will be posted on the CCB website, as well as a full report when the radiocarbon dates come through (there is about a 6-8 month wait at the lab) so do watch this space!

[Click here to read more about the what happened at the excavation](#)

Beacons of the Past – looking forward

The next year will see a flurry of activity as all the threads come together with interpretation panels installed, digital resources coming online, and conservation works completed. We will be having some community excavations in April and July, and we hope we can come together in September for end of project celebrations around the Chilterns.

The year in numbers:



24 public talks online and in person with over 520 audience members



250 visitors to the Burnham Beeches Open day



45 volunteer diggers at the community dig



Chilterns Chalk Streams Project



Chilterns Chalk Streams Project

2022 marks the 25th anniversary of the Chilterns Chalk Streams Project (CCSP), and it looks to be our busiest year yet!

This is truly an exciting time for the project. There is a huge amount of work taking place to protect and enhance the threatened chalk streams of the Chilterns. In the last three years the project has grown from a staff of one, to a team of six (soon to be seven), all working to conserve this special feature of the Chilterns landscape.

The long standing work of the project continues – to provide advice to landowners, deliver practical river enhancements, carry out wildlife surveys and deliver educational visits. However CCSP is now also delivering a number of new projects with our partners.

To celebrate 25 years of the project we have launched a new e-newsletter (sign up <http://eepurl.com/hU4795>), created a guided walks programme to showcase some of the work we do, and are planning an anniversary conference for later in the year. We will also be publishing a 'state of the Chilterns Chalk Streams' report highlighting our work and the complex challenges these rivers face.



Chalk Streams & Wetland Meadows Project

In July 2021, the Chilterns Conservation Board and The Chiltern Society secured £294,000 from the government's Green Recovery Challenge Fund. Two additional members of staff have been recruited to deliver this work.

The Chalk Streams and Wetland Meadows Project comprises a suite of projects which include: creating essential habitats for water voles and brown trout on the River Chess; restoring the River Wye backstream at Wycombe Marsh; and enhancing sections of the Hamble and Ewelme Brooks.

New interpretation boards are being created on the Chess Valley Walk, and education programme have been extended to cover all Chiltern Streams.

This project continues until Oct 2022.



Chess Smarter Water Catchment

The River Chess is one of six rivers that has been chosen by Thames Water to pilot their new Smarter Water Catchment initiative. This ground-breaking initiative aims to restore one of the Chilterns' finest chalk streams to health and brings together key organisations and community groups to address issues on a catchment scale. Over the next five years work will take place to tackle issues of water quality, flow, control of invasive non-native species, improving wildlife corridors, and improving access. The initiative is backed by significant investment to deliver projects on the ground.

In year one of the project partners have completed a baseline assessment to pull together existing knowledge and plan future interventions. Projects fall under 6 headings:

- Water quality
- Managing flow
- Control of invasive non-native species
- Improving wildlife corridors
- Involving people
- Working together



Chess Smarter Water Catchment

Thanks to this initiative CCSP has been joined by Professor Kate Heppell, who is working for the project on secondment from Queen Mary University, London.

Kate is leading a raft of citizen science work on the River to increase our knowledge, on both physical and chemical challenges the river faces.



Farming in Protected Landscapes



Farming in Protected Landscapes Programme

National Parks and Areas of Outstanding Natural Beauty are special and unique places. They are living, working landscapes that also support a huge range of habitats and species, and they are enjoyed by millions of people every year. By supporting the farmers, land managers and people who live and work in these areas, we can help protect these exceptional places and support local communities.

To help do this, Defra has introduced the Farming in Protected Landscapes programme, which is running from July 2021 to March 2024.

The programme will help farmers and land managers to carry out projects that support nature's recovery, mitigate the impacts of climate change, provide opportunities for people to discover, enjoy and understand the landscape and cultural heritage, or support nature-friendly, sustainable farm businesses. This is a programme of funding for one-off projects covering these areas of work, not an agri-environment scheme.

The programme is part of Defra's Agricultural Transition Plan. It has been developed by Defra with the support of a group of AONB and National Park staff from across the country. In the Chilterns Area of Outstanding Natural Beauty (AONB), the Chilterns Conservation Board team will be managing the programme.



Farming in Protected Landscapes Programme update for year one

In year one we have supported 20 projects, with 14 already completed and 5805 ha of land supported.

17 projects delivering for climate. Including:

- 1.84 ha of orchard creation
- 794 ha of land being managed with regenerative farming techniques
- 3 projects to improve the soil quality
- 6 projects helping to reduce flood risk
- 13 projects contributing to carbon sequestration

20 projects delivering for nature. Including:

- 6,645 metres of hedgerows planted
- 9 ha of positive management on SSSIs
- 33 ha of habitat improvement for biodiversity
- 20 ha of improved habitat connectivity

11 projects delivering for people. Including:

- 1 project delivering educational visits
- 4 projects to make the landscape more inclusive for visitors
- 5 projects to support greater public engagement in land management

19 projects delivering for place. Including:

- 6 projects increasing the resilience of nature friendly sustainable farm businesses, contributing to a more thriving local economy
- 2000 m of hedgerow restored

Farming in Protected Landscapes Programme

Our Local Assessment Panel has met six times in the first year of the programme. The Panel included representatives from the farming community as well as representatives from:

- Natural England
- Ridgeway Partnership (Oxfordshire County Council)
- Chiltern Rangers Community Interest Company
- Countryways Community Interest Company
- FWAG East
- Centre for Agri-environmental research, Reading University
- Chilterns LEADER, Ngage Solutions
- Chilterns Conservation Board

Project spend: £271,796

DEFRA allowed a one-off re-profiling of funds to yr2 and/or yr3 of the programme.

Our Year 2 budget is: £567,545

Case study

Ivinghoe Aston Farm is a mixed farm located on the boundary of the Chilterns AONB. The farm used to have an operational orchard but it became neglected in the early twentieth century. This FiPL project is enabling the orchard to be restored and expanded to create an active yet traditional orchard with benefits for the landscape, the farm, wildlife, climate change and local people.

A FiPL grant of £32,557 was approved, with the total project costing £41,452.



Mend the Gap – healing the scars of rail electrification



Mend the Gap – healing the scars of rail electrification



About

Mend the Gap is a £3.75m project, funded by Network Rail, that will help to reduce and compensate for the visual harm done to the Chilterns and North Wessex Downs AONBs by the electrification of the Great Western main line, where it runs through the two AONBs.

Enhancement Projects

Progress on the project this year has been steady, albeit slow in areas. Some good progress has been made, with funding applications being received and granted for practical projects that will enhance the landscape and restore and increase the biodiversity of local fauna and flora. Just some of this work includes establishment of a new environmental organisation within the Goring and Streatley area and small-scale works to improve a floodplain meadow in Streatley. In addition to this, funding for a feasibility study with a view to securing a future for the Youth Hostel in Streatley has also been agreed in principle.



Electrification gantries, March 2016

[Find out more on the project page of the website](#)

Mend the Gap – healing the scars of rail electrification



Mitigation Projects

Work to mitigate the adverse visual impact along the affected rail corridor has also progressed, with valuable input received from Jonathan Spencer (formerly Head of Environment and Planning at the Forestry Commission) to develop a list of species for tree and hedgerow restoration schemes, including identifying ‘signature’ Mend the Gap species (black poplar) for incorporation into all schemes to contribute towards creating a legacy for the programme. Discussions are also underway with the agents of landowners in the South Stoke and South Moreton areas where priority locations for mitigation projects have been identified.

In January 2022, Mend the Gap held two workshops (jointly with the Open for Business project) designed to help businesses in the Goring and Streatley region, develop and market new bookable Chilterns countryside experiences.

In Spring 2022, Project Manager, Jo Watson moved on to pastures new, and the CCB and North Wessex Downs AONB are now planning to recruit for a new Manager to lead the Project forward.

[Watch the programme video](#)



INFLUENCING

*Holding contractors and authorities to account by ensuring
the highest environmental standards are maintained*



CHILTERNS
CONSERVATION BOARD

Planning and development – an overview



It was another very busy year for the Planning team. Fortunately, the anticipated reforms following the previous year's Planning White Paper failed to materialise until May 2022 in the form of the Levelling-Up and Regeneration Bill – something to look forward to.

The Government updated the National Planning Policy Framework (NPPF) in July 2021, including a provision that development in the setting of a protected landscape should be “sensitively located and designed to avoid or minimise adverse impacts” (para 176). Other revisions implemented the Building Better Building Beautiful (“Scruton”) Review, following a consultation to which we had responded in March.

We submitted a robust response to DLUHC's consultation on Creating a Vision for the Oxford-Cambridge Arc, focusing on its failure to (a) add anything locally- or regionally-distinctive over their aspirations for development already included in the NPPF, and (b) recognise to contribution made to the social, economic and environmental well-being of the region and its residents by its world class landscapes, including the Chilterns AONB.

Planning and development – an overview

The Planning team made a significant contribution to CCB's response to the Government's Response to the Landscapes Review consultation, as reported elsewhere.

We also responded to several local plan consultations, including

- being generally supportive of the draft Three Rivers Local Plan, and encouraging them to do more for the chalk streams that give the district its name;
- continuing to be critical of the Central Bedfordshire Local Plan for supporting the M1/A6 link road through the AONB, plus associated development in our setting;
- giving a high-level response to an initial survey on a new local plan for Buckinghamshire, again focusing on the plan needing to recognise the contribution made by the Chilterns AONB to the county's social, economic and environmental well-being.



Planning and development – the fine detail

Alongside the CCB's Conservation and Landscape Officer, we continue to work with Natural England to reduce the impacts of HS2 infrastructure on the AONB, including providing detailed responses to 'schedule 17' applications. A significant success has been with achieving a significant scaling down of the design for the Amersham vent shaft headhouse structure.

During the year the number of major planning applications submitted for development in or within the setting of the AONB, continued apace.

A contentious scheme within the AONB for 133 care village dwellings at Little Sparrows, Sonning Common, was granted on appeal in June 2021. CCB appeared at the planning inquiry and, upon receipt of the decision to allow the appeal, submitted a complaint to the Planning Inspectorate. We subsequently expressed support for South Oxfordshire's legal challenge of this decision, ultimately without success in the High Court.

A number of other major developments have resulted in CCB objections, notably at East of Green Street Chorleywood (Three Rivers DC), for 800 and 300 homes (to be determined), 30 at Mile Barn Farm Dagnall (Central Beds) (refused) and several major schemes within the setting of the AONB including 3,850 and 500 dwellings both near Barton-Le-Clay (Central Beds, withdrawn and resubmitted May 2022), 100 at Pyrton Road Watlington (SODC, granted), 72 at Church Road Ivinghoe (Buckinghamshire, refused), 1,100 at Princes Risborough (Buckinghamshire, current) and 300 at Little Chalfont Golf Club (Buckinghamshire, refused).

Planning and development – the fine detail

Several smaller scale proposals have, nonetheless, still been harmful to the special qualities of the AONB and resulted in objections. During 2021/22 several such schemes have been refused, to which CCB has raised objections. Examples include new 'one-off' dwellings at Frithsden (Dacorum) and Lys Mill Watlington (SODC), both refused and several small-scale housing projects within the protected landscapes at Gaddesden (Dacorum, dismissed on appeal) and at Ivinghoe (Buckinghamshire, dismissed at appeal). The prior approval of telecommunication masts has generated several inappropriate proposals, requiring refusal or amendments at Monks Risborough, Cholesbury, Fingest and Ibstone.

Apart from HS2 schedule 17 applications, the proposed expansion of Luton Airport is likely to result in a NSIP application (Nationally Significant Infrastructure Proposal), later this year. A decision by the Secretary of State in March 2022 to 'call-in' an application to increase passenger movements to 19 million per year (from 18 currently) did generate an objection from the CCB. We continue to monitor the likely NSIP application.

Neighbourhood Plans work has generated five responses at Kidmore End, Henley and Harpsden, Shiplake, Sonning Common and Woodcote. Submissions at Henley and Woodcote raise critical issues on the relationship between these Neighbourhood Plans and the SODC Local Plan. At Henley an extension of Highlands Farm is deemed harmful to the AONB and at Woodcote we have expressed support for their housing allocations, within the AONB policy framework as set by the Local Plan.

Grand Designs

We supported the Chiltern Society in presenting the Chilterns Buildings Design Awards in September 2021. The chair of our Planning Committee, John Nicholls, and our planning adviser, Mike Stubbs, were among the judges for the awards, which for the first time sought specifically to recognise modern and environmentally-conscious innovation, as well as more traditional design elements. The overall winner and joint best modern design was Sable House in Freith, and not just for the slide in the hallway.



Sable House – Best modern house and overall winner of the Chilterns Design Awards



Prize winners were awarded their certificates in a ceremony at the winning building on Thursday 23 September

Holding HS2 to account

A **Parliamentary Debate** was held in September 2021 in response to a petition that received over 150,000 signatures. Many MPs voiced concerns over the spiralling costs, increased environmental damage, lack of respect for local communities and lasting damage to the Chilterns AONB. Yet construction continues.

The two 170m long **Tunnel Boring Machines (TBMs)** were launched in May and July 2021, though had to be stopped just before Christmas as the first vent shaft at Chalfont St Peter wasn't ready for them. After a three-month delay they have continued and, at the time of writing, have just passed beneath the River Misbourne at Chalfont St Giles. Along with others, we remain concerned over the unknown impacts on the aquifer and flow of the Misbourne, one of our internationally rare Chalk Streams.



*Amersham vent shaft looking South – November 2021.
Image Credit: Chiltern Society*

Holding HS2 to account continued

Despite the CCB not having statutory consultee status in the AONB, we continue to raise concerns and offer advice for emerging designs and through the Schedule 17 planning application process. We presented a robust case against the Amersham Vent Shaft 'crown of thorns' and have joined calls for improved bridge designs in keeping with the AONB landscape and also to minimise impacts on wildlife, including the rare Barbastelle bats that have been found foraging around the mature oak trees lining Leather Lane.

[Find out more on our website](#)



Leather Lane looking east towards temporary construction route crossing – November 2021.

Image Credit: Chiltern Society

Undergrounding Electricity Infrastructure – conserving the Chilterns natural beauty

Last year we reported on work with UK Power Networks to deliver two schemes to underground power lines and remove overhead wires, pylons and poles. We are very pleased to report that:

- **Dunstable Downs** – the last of 22 steel pylons were finally felled in October 2021, following the undergrounding of new cable throughout the summer and removal of 7.72km of 33kv overhead wires. All that remains now are wonderful views across the beautiful Dunstable Downs escarpment.
- **Latimer/Chenies** – the project to remove 8.72km of 11kv cable and 100 wooden poles on routes beside and crossing the River Chess, now has all the consents and plans in place and we are hoping work will start soon.





PEOPLE AND SOCIETY

*Supporting rural businesses and creating
a welcoming countryside for everyone*



CHILTERNS
CONSERVATION BOARD

Chilterns Walking Festival



The Chilterns Walking Festivals took place in May and October 2021. Highlights from both festivals include:

- The Festivals offered a total of **143 walks**, attracting a total of **1,460 participants**
- The local economy benefitted with **74% of participants using a local business** before or after their walk. 35 businesses were directly involved in the Walking Festival (pubs, cafes, leisure attractions and local tour guides). Many more businesses benefited from additional footfall to the area and from media coverage. This was important for the leisure and hospitality sector which had been so adversely affected by the Covid pandemic.
- **48% of participants discovered new parts of the Chilterns** during the Festival
- **40% of participants came from outside the Chilterns**, many from nearby urban areas
- The Festivals focused on expanding the programme of family-friendly, health & wellbeing walks and those involving local businesses
- We **worked with over 50 organisations** and volunteer walk leaders across the Chilterns
- A celebration of Chilterns Food & Drink took place in the second week of the autumn Festival with lots of community events delivered by Chalk, Cherries and Chairs. A wide range of events were on offer, from bodgers pub tour and orchard events to chutney making, outdoor cooking and local produce walks.



Walking Festival quotes and feedback

"Thank you for coordinating the Festival. It has been especially important this year to encourage people to get out into the Chilterns countryside, and the Festival walks facilitate this in a responsible way". – Philippa, Pipsticks Walks (Chilterns business)

"I really enjoyed the walks and the chance to explore and relax in beautiful countryside. The volunteers were ever so welcoming and friendly. Thank you for a most enjoyable day." – Participant (Re: Curious Coddiwomple Walk)

"It was an exciting experience to have the coppicing in the woodland. My children and family enjoyed so much. The leaders were very so nice and caring and we had a great fun and learnt more about the nature. We are looking forward to the next event". – Participant, re: Coppicing cookout with Chiltern Rangers

"Thank you for a most enjoyable day learning about the navigation essentials. It was grand to get down to the details and, as always, a delight to spend time with you receiving so much valuable information not only about the subject but all the other 'snippets' you share." – Participant





Above: Dawn Chorus Walk

Right and top right: Map reading courses





Open for business – promoting the local economy



The Open for Business project has been helping businesses to develop and market new bookable Chilterns countryside experiences. This fits with our aspirations to develop sustainable tourism and promote new experiential tourism products which help to communicate the special qualities of the Chilterns. We held two workshops in January 2022 attracting 34 participants. There was lots of interest and we have been following up with 1:1 business support.

- We have prepared a dedicated page on the new Chilterns AONB website which will give businesses a route to market ([interim page here](#)) and we are developing and promoting new experience-based visitor Itineraries which will be promoted on the site. [SEE HERE](#) for further information on our Experiential Tourism work and support for businesses.
- We held two Chilterns Food & Drink workshops in July 2021, aimed at walk leaders, local businesses and those interested in or involved with promoting the Chilterns. 40 participants attended. The workshops explored opportunities for developing the food and drink offer in the Chilterns, and ideas for promoting this as part of the destination offer. There were presentations from food producers, farm enterprises and tourism businesses.





RURAL TOURISM WORKSHOPS

Discover how to develop your own personalised and immersive tourism experiences.

10 JANUARY

FREE INTRODUCTORY
MINUTE WEBINAR

Learn how to distribute and promote your product, identify and attract new audiences, meet other businesses and make valuable new tourism contacts.

20 JANUARY

FREE FOLLOW-ON
INTERACTIVE 3 HOUR
WORKSHOP IN
RING-ON-THAMES

FREE for tourism businesses in the Chilterns and North Wessex Downs Area of Outstanding Natural Beauty.

Spaces are extremely limited, book now to avoid disappointment.

www.chilternsaonb.org/workshop



JOIN US FOR A *Chilterns Celebration of food and drink*

Outdoor cooking in the woods
Local produce walks – sampling local specialities
Foraging, fungi walks and apple pressing

October 24 to 31 2021



Visit www.chilternsaonb.org for more information and booking details

Feedback from businesses benefitting from the Open for Business programme

"We are so pleased to have been included in the Open for Business programme through participation in the Chilterns Walking Festivals and we have benefited from inclusion in the 'Family fun' blog and social media. These activities have helped to bring in additional visitors and raise awareness of our farm". – Kate, Kew Little Pigs, March 2021

"Fascinating workshop and just what I needed to learn ahead of my journey into this brave new world". – Matt Writtle Photography (Feedback on the Experiential Tourism workshop)

"We have really enjoyed working with the Chilterns Conservation Board through the Open for Business programme. They've been integral in helping us launch our new family business. We've benefitted from their networking events and they've been really inclusive in inviting us to join local events to spread the word about our business. Thank you for all your support and we look forward to working with you in the future". – Tori and George Rouse, The Rocket Oven



Promoting the local economy



GET READY FOR A CELEBRATION OF CHILTERN'S FOOD & DRINK THIS OCTOBER



beginners, a range of Nordic walking and a Mindful walking experience around Aylesbury, allowing you to really immerse yourself in your outdoor experience by tuning into all your senses.

Wildlife and Nature... Join Katrina Hughes for a fascinating journey through the world of mushrooms in Penn Wood looking at their mythology and relationship with the forest and other life forms. Bird lovers will enjoy the Watlington Reservoir Wildlife Wander with the Wildlife Trust, or join Steve at GG Wildlife Experiences for some kingfisher spotting along the Thames. Natural England invites you to experience Watlington Hills National

Chilterns AONB @ChilternsAONB · 4h

You can't beat a [#walk](#) in the [#countryside](#) & the promise of homemade local produce at a [#cafe](#) along the way!

Read our top picks of [#chilterns](#) cafes with walks, all with outdoor seating in beautiful locations [bit.ly/3yXi4zC](#)

[#shoplocal](#) [#visitchilterns](#) [#getoutside](#)



Green Recovery

- We provided advice and strategic input to a number of tourism related reviews including the Visit Buckinghamshire tourism review (part of the DCMS review of Destination Management Organisations focusing on post-Covid recovery). We also led a joint response to the DCMS review on behalf of the National Association of AONBs.
- We promoted #ShopLocal and the re-opening of hospitality and leisure attractions.
- Work to revitalise the Chess Valley Walk commenced as part of the Chalk Streams and Wetland Meadows green recovery project, with new branding, signage, interpretation and access improvements underway.



Koko's near Amersham, a new walkers café promoted through Open for Business

Promoting active outdoors

Health and wellbeing has been a key focus for us throughout this year. We have run a number of campaigns encouraging people to get active outdoors through our blogs and Communications. Some of the articles we have published include:

- A “[Get Active](#)” blog which included a wide range of activities aimed at improving wellbeing and mental health, highlighting the range of clubs and organised events in the Chilterns.
- A Campaign focusing on café and pub walks, featuring several new businesses
- A Summer guide to family-friendly places to visit [see here](#)





COMMUNICATIONS

Sharing our work and engaging new audiences



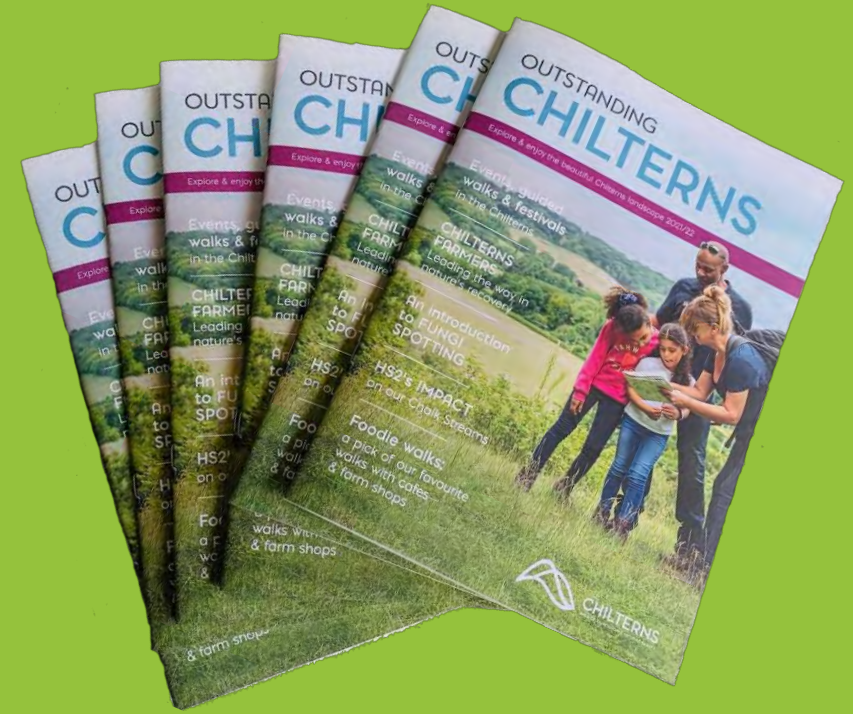
CHILTERNS
CONSERVATION BOARD

Communications – summary

The communications team has had a busy year focussing on a number of campaigns and initiatives to support the team's work, help raise the profile of the Chilterns Conservation Board and increase the enjoyment and understanding of the Chilterns AONB for those who live, work and visit this landscape.

Some of the work the team have undertaken includes:

- Supporting project teams with promotion and sharing their great work, in addition to supporting external agencies and NGOs with conservation-based initiatives, such as Affinity Water's SOS (save our streams) initiative
- Website content updates
- New photography portfolio and drone footage
- New website creation and development for launch in September 2022
- Creation and distribution of a monthly e-newsletter
- Managing social channels including Facebook, Instagram, Twitter and LinkedIn
- Producing press releases and dealing with local and national media to help share important news
- Creating a programme of varied, interesting and relevant content for publication on our website
- Supporting national awareness days and making relevant connections to the Chilterns.



Outstanding Chilterns Magazine

Our annual flagship magazine was published in September with a wide range of articles including, a celebration of Chilterns Food and Drinks producers, Chilterns arts and crafts, the benefits of grazing, a focus on Marlow, water saving initiatives, project news, an introduction to fungus, and more! 20,000 copies were distributed throughout the region, this year increasing the area covered so it now includes, Berkhamstead, Hemel Hempstead, North Hampshire and Basingstoke.

Communications – content and campaigns

Some of the content and campaigns we've run over the past year includes:

- Promotion and awareness of [staying safe in the Chilterns over summer](#), published in line with the government's final step in the relaxation of lockdown rules on 19 July.
- Promoting [local cafes with walks nearby](#)
- [#Takethelead campaign](#) – educating the public and encouraging them to keep dogs on leads when walking in the countryside
- [How to forage the fruits of the Chilterns](#)
- [Chilterns based zero waste shops](#)
- [Get Active Outdoors this Spring](#)
- [A Year with the Chiltern New Shoots - our young conservationists](#)
- [25th Anniversary of the Chilterns Chalk Streams Project](#)
- [Chilterns Conservation Board welcomes publication of the Government's response to the Landscapes Review](#)
- [Tracking the Impact: In Celebration of Volunteers](#)
- [Forging ahead with Farming in Protected Landscapes in the Chilterns](#)



E-newsletter

Sign up to receive our monthly newsletter and be the first to hear about the latest events, festivals, news and opportunities to get involved with our work to protect and care for the Chilterns countryside.

Sign up here: <http://bit.ly/ccb-news>

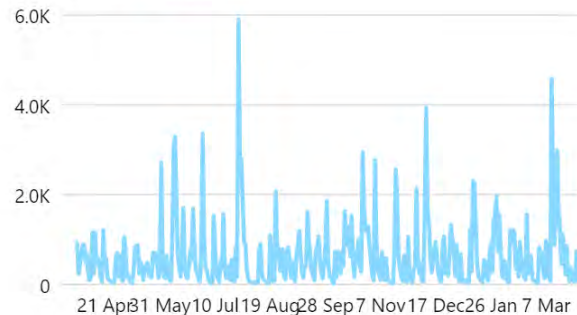
Communications outcomes at a glance

- **Website:** 876,562 page views – a 29% drop on the previous year, due to 2020 being exceptionally high as more people visited the countryside during lockdown. The Interactive map, walks and rides and the Chess Valley walk continue to be our most popular pages. Average time spent on a page is 1min 40 secs.
- **Chilterns AONB Social channels,** went from strength-to-strength with a huge increase in reach on Instagram of 10,835 (260% increase year on year) and 293 new followers, whereas Facebook saw a decline with just 199 new page likes (down 59% from 2020). Facebook did achieve 2,261 page visits which was just 6% lower than last year. Our most popular Facebook post was the announcement of the Green Recovery Challenge Funding for the Chalk Streams and Wetland Meadows Project and our most popular Instagram post was an image of the Hambleden Brook which achieved 269 likes.
- Twitter has seen a steady increase with 580 new followers taking us up to 7,806. Engagement in terms of mentions and impressions slowed on Twitter over the latter half of the year.
- **Average E-newsletter** opens for 2021-22 was 38.4% (a 13% increase on the industry average of 33.9%) and the average percentage of people who click a link within the E-newsletter is 10.3% (more than double the industry average of 5.1%)

Reach

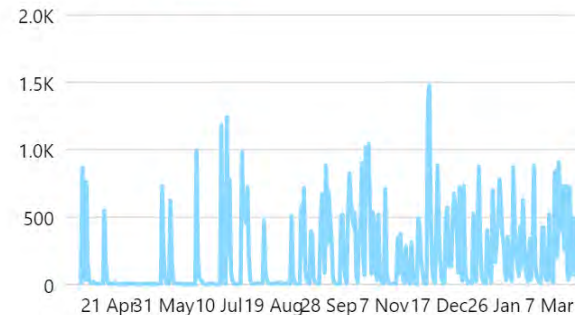
Facebook Page reach ⓘ

72,122 ↓ 16.4%



Instagram reach ⓘ

10,835 ↑ 260.4%

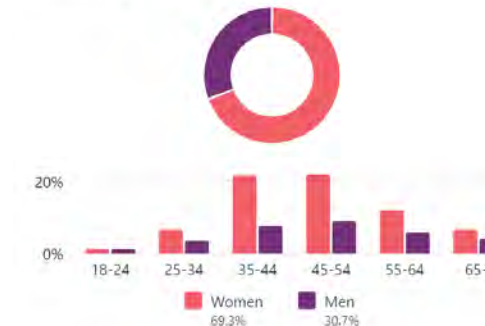


Export

Facebook Page likes ⓘ

3,824

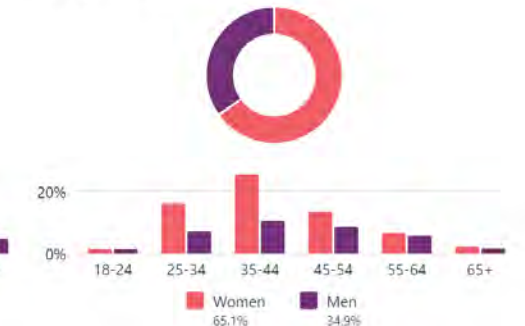
Age & gender ⓘ



Instagram followers ⓘ

2,712

Age & gender ⓘ



Some Media headlines

Privacy Policy | Feedback | Follow 21.0M

MailOnline

Monday, Oct 4th 2021 9AM 12°C 12PM 15°C 5-Day Forecast

Home News U.S. Sport TV&Showbiz Australia Femail Health Science Money Video Travel Best Buys Discounts Login

Chilterns and Cotswolds could be given National Park status joining the Lake District and Snowdonia - as ministers plan to create 'national park city'

- The review is modelled on the original 1947 Hobhouse report which led to the creation of national parks
- New areas will be designated with National Park and Area of Outstanding Natural Beauty (AONB) status
- The Chiltern Hills and Cotswolds are already AONBs but have now been privately proposed as National
- The move would mean they fall under more stringent planning regulations

FORWARD FOR MAILONLINE

UPDATED: 12:57, 21 August 2021

Chilterns Area of Outstanding Natural Beauty could be expanded to Hemel Hempstead and Luton

Chilterns Areas of Outstanding Natural Beauty (AONB) extension to considered Chilterns AONB

Love Local SUBSCRIBE Puzzles Jobs Homes Motoring Book an ad Local Listings Local Info Contact us

Oxford Mail

News Sport Oxford Utd What's On Business Announcements e-Editions Awards

A free family fun day is being held as part of a week-long celebration of the Chilterns taking place this summer with a series of walks, pub tours, workshops and more.

Entertainment and activities include falcon displays, ferret racing, children's craft activities, face painting and pole lathe demonstrating.

There will also be lacemaking and ice cream stalls - all to celebrate the heritage and landscape of the Chilterns.

Local businesses Chiltern Rangers, The Berks, Bucks & Oxon Wildlife Trust, Buckinghamshire Council and Amersham and Wycombe Museum will also be

activities for the whole family to try.

Love Local SUBSCRIBE Puzzles Jobs Homes Motoring Book an ad Local Listings Local Info Contact us

Watford Observer

News Sport What's On Promotions Our Town Watford FC Announcements e-Mags Where Can I Find..

Watford 15°C Register Sign in

0 comment

Plans to expand an area of outstanding natural beauty could extend environmental protections and bring it closer to people living in towns.

Natural England announced on June 24 that the Chilterns Area of Outstanding Natural Beauty (AONB), is to be considered for boundary expansion.

An Area of Outstanding Natural Beauty is an area of countryside designated for conservation due to its significant landscape value.

Media headlines cont.



NEWS

21st April

The Chilterns Walking Festival to return in May after months of lockdown



By Shruti Sheth Trivedi | [@_ShrutiST](#)
Community Content Editor

Oxfordshire council confirms legal action against inspector's AONB homes approval

An Oxfordshire council is seeking a judicial review of an appeal decision which saw consent granted for a retirement village in an area of outstanding natural beauty (AONB), while the AONB authority has made a formal complaint about the decision to the Planning Inspectorate (PINS).



Dunstable Downs project to transform the skyline accelerated by state-of-the-art machinery

The project will also boost power supplies for the local area

Buckinghamshire Council raise concerns about impacts of HS2's tunnelling operations

Buckinghamshire Council and the Chilterns Conservation Board have raised concerns about the impacts of HS2's tunnelling operations on Buckinghamshire's aquifer and chalk streams.

FINANCES

Our financial year and more about us

Our Financial Year Ending Mar 22

Income

DEFRA	£	484,195
Local Authority Contribution	£	121,309
Project and other Income	£	1,214,336
Total Income	£	1,819,840

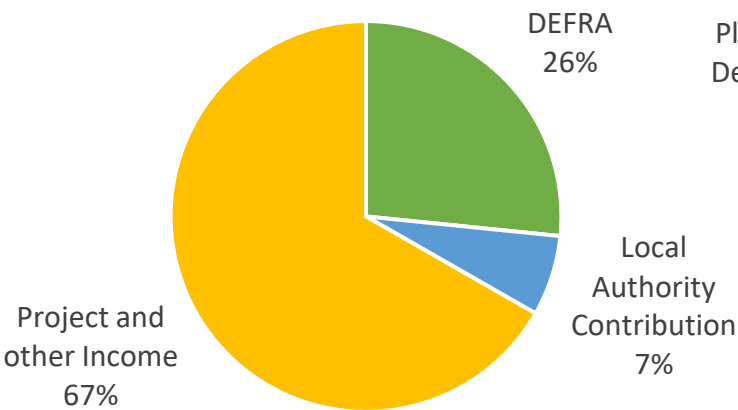
Expenditure

Overheads	£	200,768
People and Society	£	122,922
Landscape and Conservation	£	1,350,728
Planning and Development	£	132,722
Total Expenditure	£	1,807,140

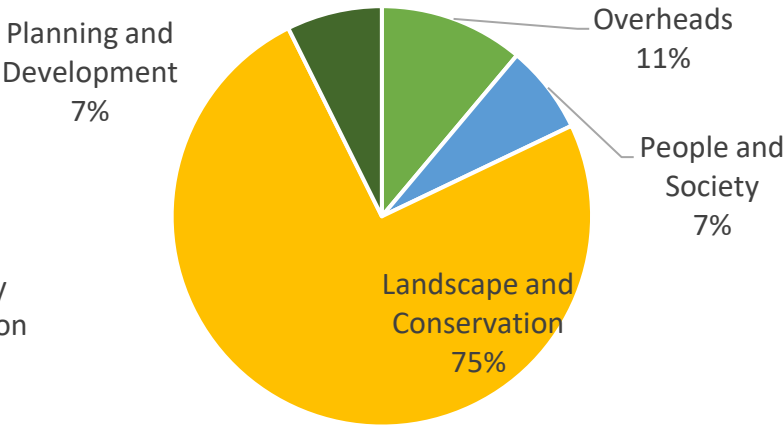
Surplus

Total Income	£	1,819,840
Total Expenditure	£	1,807,140
Surplus for year	£	12,700

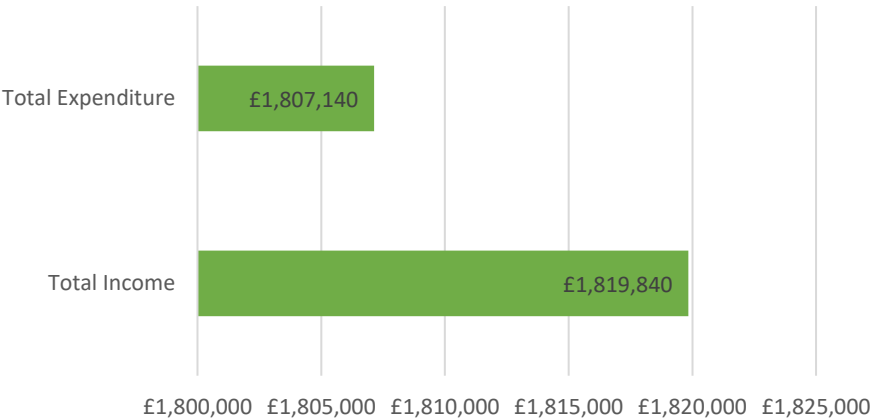
INCOME



EXPENDITURE



Total income vs. total expenditure





About us

- The Chilterns is designated an Area of Outstanding Natural Beauty in recognition that it is one of the finest landscapes in England. The Chilterns Conservation Board is responsible for caring for this special landscape and work to fulfil our statutory purposes and duty, which are:
 - To conserve and enhance the natural beauty of the Chilterns AONB.
 - to increase understanding and enjoyment of its special qualities.
 - To foster the social and economic wellbeing of local communities.
- Established by Parliamentary Order in 2004, the Chilterns Conservation Board is an independent body and one of only two Conservation Boards in the country, the other being the Cotswolds.
- Our board comprises 27 members drawn from local authorities, parish councils and appointments made by the Secretary of State at the Department for Environment Food and Rural Affairs. See our list of Board Members [here](#)
- Our staff team is based in Chinnor, Oxfordshire and comprises individuals with a wide range of skills and expertise including ecologists, planners, archaeologists and tourism professionals.

Thank you

Thank you for reading our annual review 2021-22. Please contact us if you would like any further information on any of the work highlighted in this report.

Contact us

Chilterns Conservation Board

The Lodge
90 Station Road
Chinnor OX39 4HA

Telephone: 01844 355500

Email: office@chilternsaonb.org

Keep in touch

Keep up to date with the latest news and information from the Chilterns Conservation Board and the Chilterns AONB by following us on social media:

[Twitter](#)
[Facebook](#)

[Instagram](#)
[LinkedIn](#)

