



CHILTERNs
LANDSCAPE PARTNERSHIP

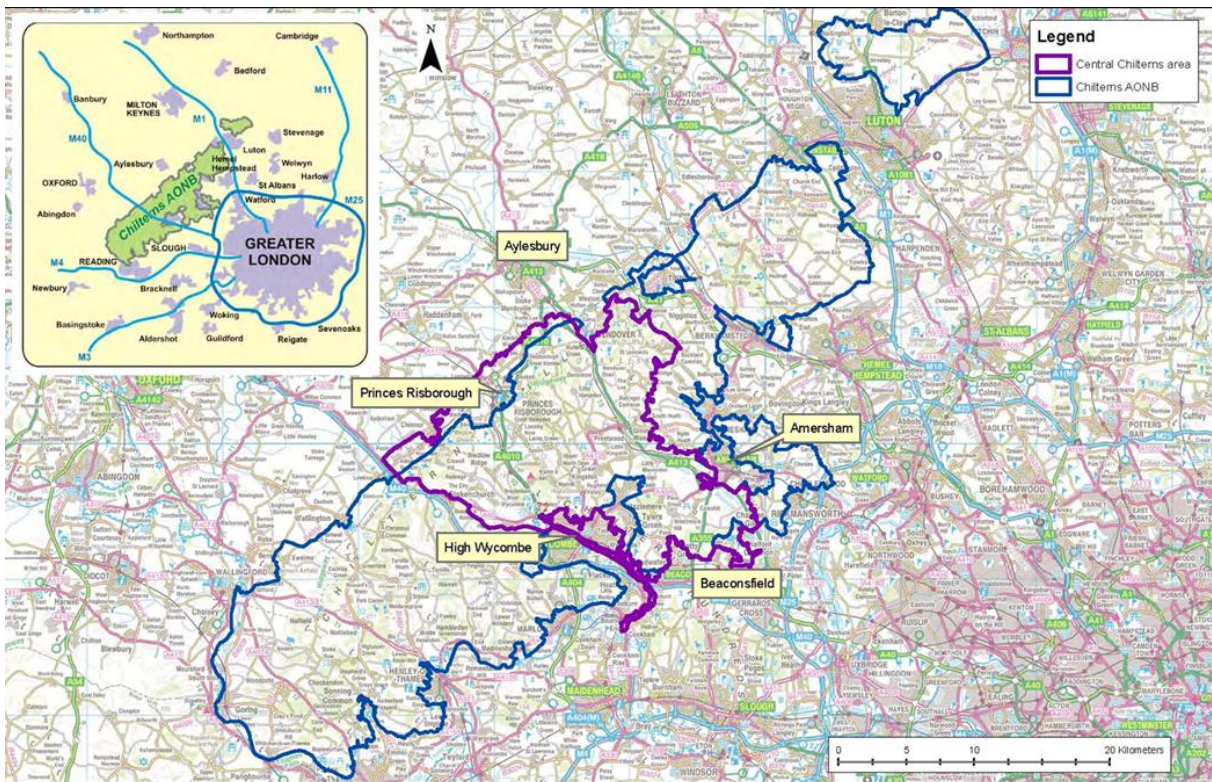


CHILTERNs
AREA OF OUTSTANDING NATURAL BEAUTY

Invitation to Tender

Location: Central Chilterns

Works: Stock fencing & new field gates



© Crown copyright and database rights 2018 Ordnance Survey Licence no. 100044050

Issued: 30 September 2021

The Chalk, Cherries and Chairs Project

Chalk, Cherries and Chairs is a 5-year National Lottery Heritage Funded Landscape Partnership Scheme being delivered in the Central Chilterns aiming to create, restore, manage and connect habitats across the Central Chilterns project area.

Focus is on priority habitats consistent with the Central Chilterns Landscape (grassland, woodland, hedgerows and chalk aquifer fed headwaters). The project supports landowners to both deliver high quality habitat on their land and to work more closely with neighbours to agree collaborative approaches.

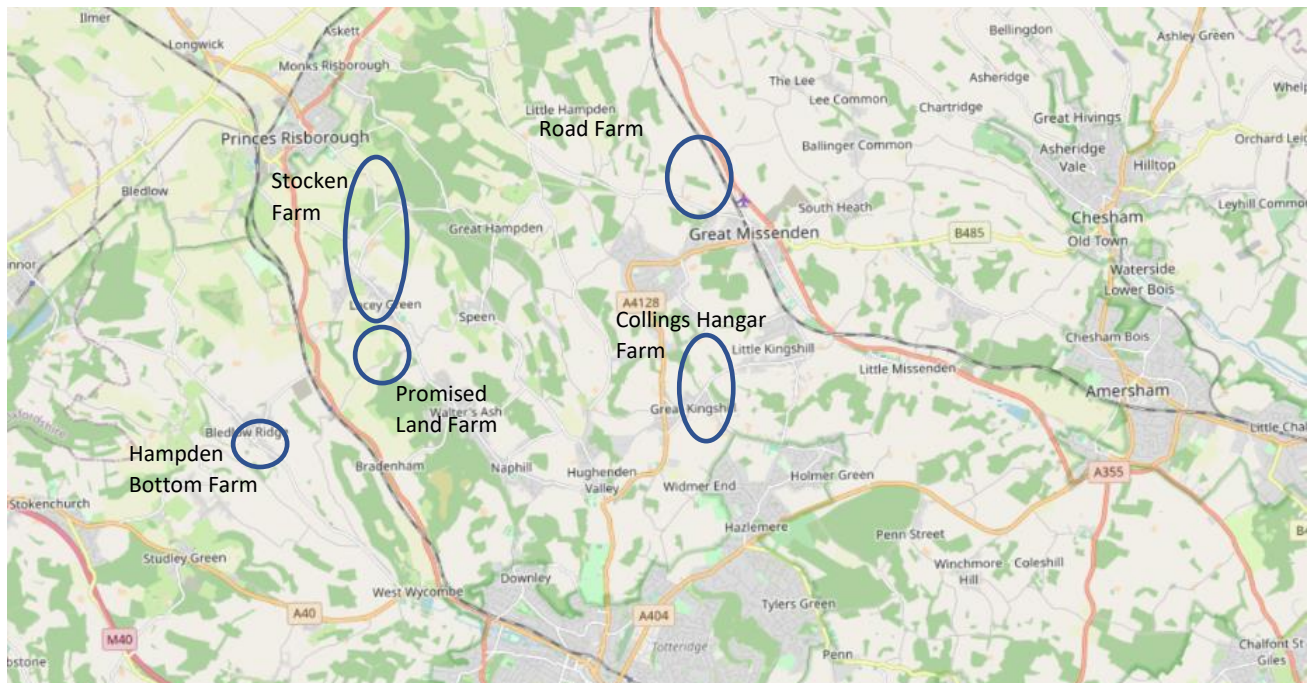
Description of work

The project team are seeking fencing contractors for autumn/winter 2021-2022 to work on five farms in the Central Chilterns. Work can start in October 2021 and must be completed and invoiced before the end of December 2021.

Funding for this contract is subject to final approval of grant funding which will be confirmed prior to tenders being assessed and contracts awarded on 22nd October 2021.

There are separate tenders for planting hedges, coppicing and hedge laying.

The map below shows the locations of the farms in this phase of the project. Detailed maps are provided in the Annexes. Tenders are invited for all, or some, of the sites.



Summary of quantities

Farm	Field name	Stock net with wooden posts and 2 strands of wire (m)	Clipex posts at 4m intervals with stock net and 2 strands of wire (m)	Clipex posts at 12m intervals with insulators (m)	Clipex posts at 4m intervals with 2 strands barbed wire (m)	Wooden posts with insulators at 4m intervals (m)	15ft gate with wooden posts	6ft gate with wooden posts
Promised Land Farm	7507 'Top Hay Field'					300		
Collings Hangar Farm	Between Meadsgarden and Lawrence Grove Wood	280					1	
	north of Lawrence Grove Wood	450						
	TOTAL	730					1	
Hampden Bottom (Bledlow Fields)	Behind Haw Lane Houses		345					
	Between footpath and Haw Lane fields		140					
	Footpath field		276		110			
	Field to west of footpath field		598					
	Most westerly field		136		118			
	TOTAL		1,495		228			
Stocken Farm	East of farm buildings		535				2	1
	Culverton: north side of Garners bank		700				1	
	Culverton: west of playing fields		760				2	
	Grimsdyke Farm path		412					
	Culverton footpath		250					
	TOTAL		2,657				5	1
Road Farm	Hedge 6		130	450			1	
	Hedge 4		120	120			1	
	Hedge 10a		120	120			1	
	Hedge 11		85				1	
	Hedge 7		215	215			2	
	Hedge 9a		250	250			2	
	Hedge 16a		175	175			1	
	Hedge 16b		225	225			2	
	Hedge 20		225	225			1	
	Hedge 8		350				5	
	Hedge 1			250			3	
	Hedge 2			90				
	TOTAL		1,895	2,120			20	
TOTAL		730	6,047	2,120	228	300	26	1

Specifications

The wooden fence posts should be chestnut stakes (min 4" diameter) dug to at least 55cm at max 4m intervals with 4 insulators attached. Chestnut strainers should be installed at each end of the run and dug-in to a minimum depth of 90cm.

The stock fence should be chestnut stakes (min 4" diameter) dug to at least 55cm at max 4m intervals with sheep net stapled at the top, 3rd, 5th and bottom strands and two strands of wire at the top. Chestnut strainers should be installed at each end of the run and dug-in to a minimum depth of 90cm.

The Clipex posts should be 'standard' and the end of each run should have chestnut strainers dug in to a minimum depth of 90cm. Where stock net or wire is specified, it should be tensioned.

Gates should be galvanized steel.

Proposal

Tenders will be evaluated on the basis of the following details:

- An understanding of the brief.
- A detailed breakdown of costs.
- A description of how the work will be carried out.
- How ground conditions will be protected.
- Details of warranty.
- Summary of health and safety procedures.
- Details of your insurance.
- Organisational and individual skills, knowledge and experience.
- Earliest potential start date.

Submission

For a site visit or questions please contact: **Harriet Bennett**, Land Management Officer (Chilterns Conservation Board).

hbennett@chilternsaonb.org

07946 629708

Tenders should be submitted by 17:00 on 15 October 2021 to Harriet Bennett (details above).

References from previous clients may be requested during the assessment process.

Annex 1 - Promised Land Farm, Lacey Green

— Chestnut electric fence posts with strainers = 300m gapping up



Annex 2 – Collings Hangar Farm, Prestwood

— Sheep net with chestnut posts and strainers = 450m + 280m — 15 ft gate x 1
— New hedge



Annex 3 – Hampden Bottom Farm, Bledlow

- Standard Clipex fence posts with chestnut strainers & two strands of barbed wire = 228m
- - Standard Clipex fence posts with chestnut strainers, stock net & one strand of barbed wire = 1,495m
- New hedges - - Copping and gapping up



Annex 4 – Stocken Farm, Lacey Green

- East of farm buildings:* — 15ft gates x 2 — 6ft gate x 1 — new hedge
- Standard Clipex posts with stock net, one strand of barbed wire & chestnut strainers = 535m



- Culverton:**
- Standard Clipex posts with stock net, one strand of barbed wire & chestnut strainers = 250 + 700 + 380 + 380 = 1,710m
 - new hedge
 - 15ft gates x 2



- Grimsdyke Path:**
- new hedge
 - Standard Clipex posts with stock net, one strand of barbed wire & chestnut strainers = 412m



Annex 5 - Road Farm, Great Missenden

- Clipex fence at 12m intervals with insulators = 2,120m
- - - Clipex fence at 4m intervals with stock net = 1,895m
- 15 ft Gates x 20
- New hedge Laying Coppicing and gapping up

