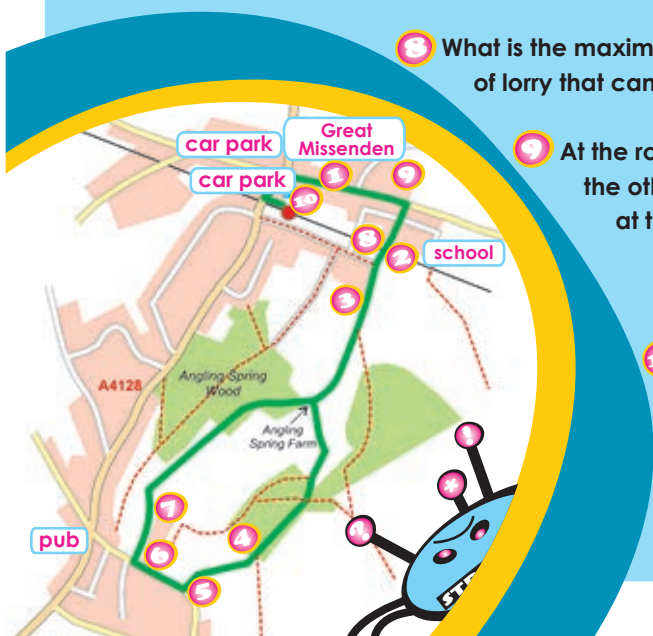


# Stretch can beat the brain bug.. can you?

## QUESTIONS..

- 1 What is the picture on the front of the Roald Dahl museum?
- 2 On the way up the lane you go under a bridge. What runs over it?
- 3 What is the name of the white house on the right? Do you know who lived there? (clue: he wrote 'Charlie and the Chocolate Factory')
- 4 Look out for fallen trees in the woods which are home to many insects. What fantastic Dahl character used to live there with his family?
- 5 When you join the road, Thimble Farm Cottage is on your left. What is there on top of the weather vane?
- 6 What is the number of the cycle route that follows the bridleway?
- 7 Notice the barn on the left. What is it made from?
- 8 What is the maximum height of lorry that can go under the bridge?
- 9 At the road junction, look on the other side of the road at the clock tower? What kind of numbers does it have?
- 10 In the High Street there are two old-fashioned petrol pumps. What colour are they?



## ANSWERS..

- 1
- 2
- 3
- 4
- 5
- 6
- 7
- 8
- 9
- 10

---



---



---



---



---



---



---



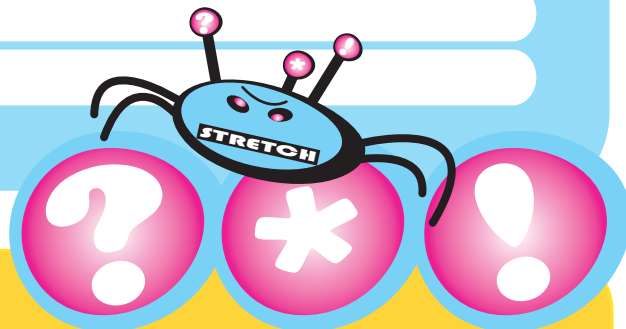
---



---



---



take a **STRETCH** brain bug on your walk and **STRETCH** your brainpower! check your answers at... [www.chilternsaonb.org](http://www.chilternsaonb.org)  
(then search for... missenden stile free walk)



**brain bug**  
**MISSENDEN**